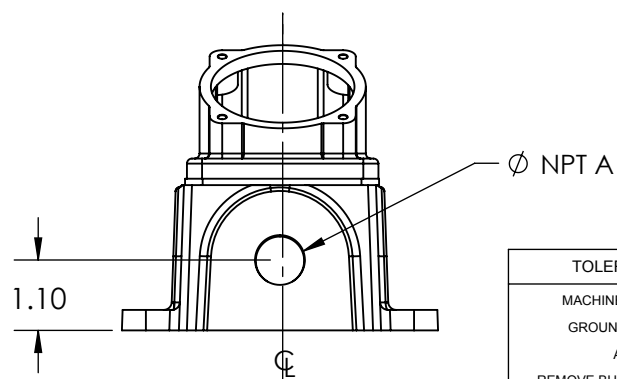
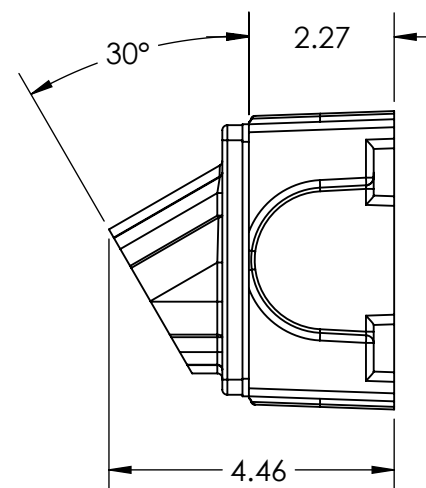
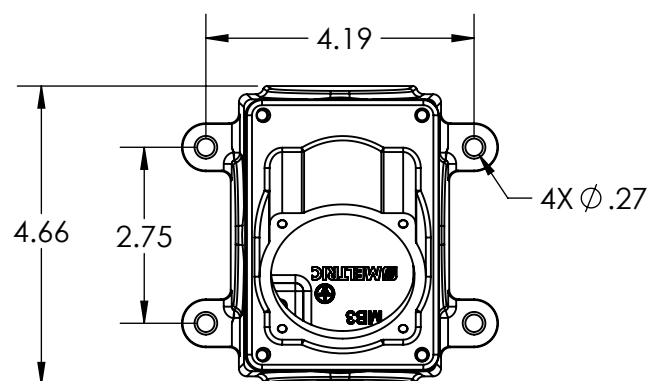
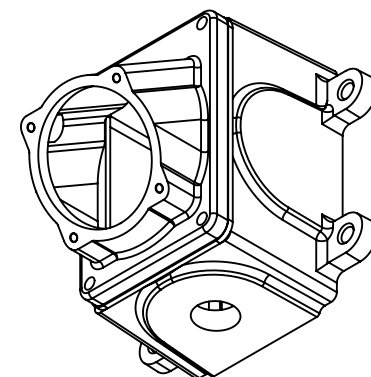
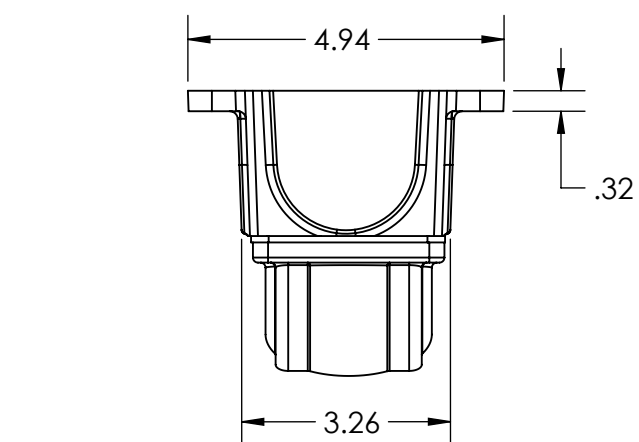



This drawing is the property of MELTRIC Corporation, Franklin (Milwaukee), Wisconsin, USA. Any unauthorized copying of this drawing by any means, ENG/RD/06 REV: 20 ISSUED DATE: 11/15/11 or disclosure of its contents to any person not authorized by MELTRIC Corporation or its agents to receive it, is strictly prohibited.



PART NUMBER	NPT "A"
712C3N05	1/2" NPT
712C3N07	3/4" NPT
712C3N10	1" NPT
712C3N12	1 1/4" NPT

TOLERANCES UNLESS OTHERWISE SPECIFIED		<div>MELTRIC</div> <div>A COMPANY OF MARECHAL ELECTRIC</div>			
MACHINED SURFACES #error: broken link	ENGLISH				
GROUND SURFACES #error: broken link					
ANGLE TOLERANCE ±1°					
REMOVE BURRS & SHARP EDGES TO .015 MAX.					
<div><div></div><div>DIMENSIONS SHOWN IN OVALS ARE INSPECTION DIMENSIONS.</div></div>					
		DRAWN	APPROVED	DRAWING TITLE:	
		JUNCTION BOX/ANGLE COMBO			
		DATE:		SCALE	MATERIAL:
				NTS	PAINTED METAL AND BLUE POLY
		SHEET:		PART NUMBER	
		1 OF 1		712C3Nxx	
		REVISION			