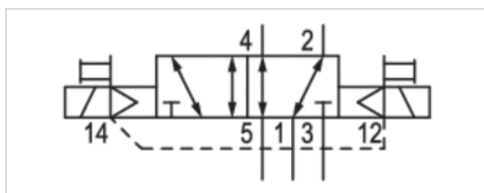


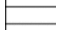
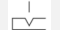
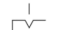

# 5/2-directional valve, Series 503

- 5/2
- $Q_n = 1200\text{--}1400\text{ l/min}$
- Plate connection
- Can be assembled into blocks
- double solenoid
- Pilot : External



Type	Spool valve, positive overlapping
Activation	Electrically
Pilot	External
Blocking principle	Single base plate principle, can be assembled into blocks
Working pressure min./max.	-0.95 ... 8 bar
Control pressure min./max.	2 ... 8 bar
Ambient temperature min./max.	-10 ... 50 °C
Medium temperature min./max.	-10 ... 50 °C
Medium	Compressed air
Max. particle size	50 µm
Oil content of compressed air	0 ... 5 mg/m <sup>3</sup>
Nominal flow $Q_n$	See table below
Pilot control exhaust	with directional pilot air exhaust
Protection class with connection	IP65
Protective circuit	Z-diode
Reverse polarity protection	Protected against polarity reversal
LED status display	Yellow
Duty cycle	100 %
mounting screws	with hexagon socket
Mounting screw tightening torque	2.9 Nm
Weight	0.236 kg

## Technical data

Part No.	MO	Voltage tolerance	Power consumption	Nominal flow $Q_n$
		DC	DC	
R503A1B40MA00F1		-15% / +10%	1.4 W	1200 l/min
R503A1B40M11BF1		-15% / +10%	1.4 W	1200 l/min
R503A2B40M11BF1		-15% / +10%	1.4 W	1400 l/min
R503A2B40MA00F1		-15% / +10%	1.4 W	1400 l/min

Part No.	Typ. switch-on time	Typ. switch-off time
R503A1B40MA00F1	15 ms	15 ms
R503A1B40M11BF1	15 ms	15 ms
R503A2B40M11BF1	20 ms	20 ms
R503A2B40MA00F1	20 ms	20 ms

Technical information

The min. control pressure must be adhered to, since otherwise faulty switching and valve failure may result!

The pressure dew point must be at least 15 °C under ambient and medium temperature and may not exceed 3 °C .

The oil content of compressed air must remain constant during the life cycle.

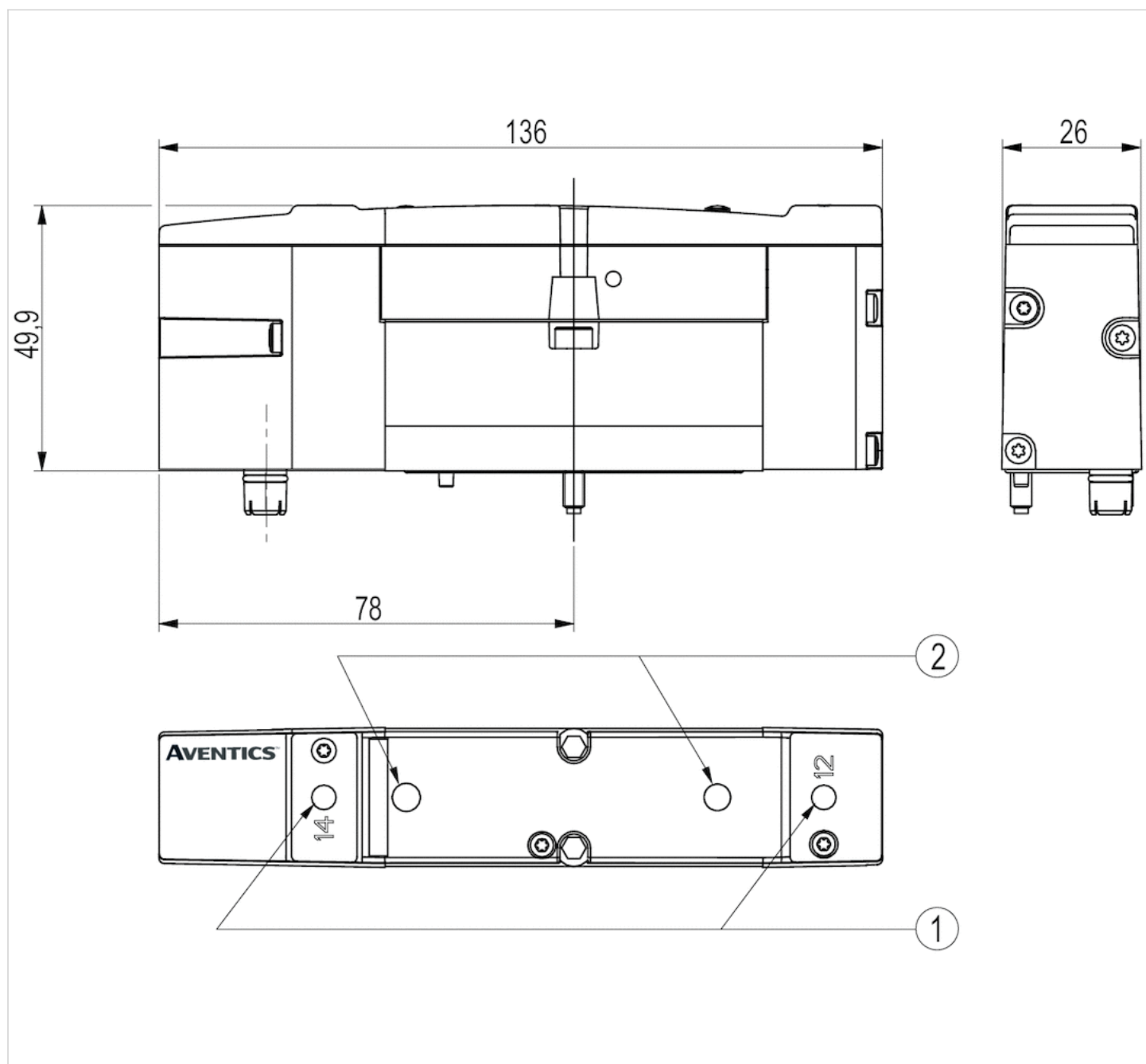
Use only the approved oils from AVENTICS. Further information can be found in the “Technical information” document (available in the MediaCentre).

Technical information

Material	
Housing	Die cast zinc
Seals	Nitrile butadiene rubber Polyurethane
Front plate	Polyamide
End plate	Polyamide

## Dimensions

### Dimensions



- 1) Manual override  
2) LED