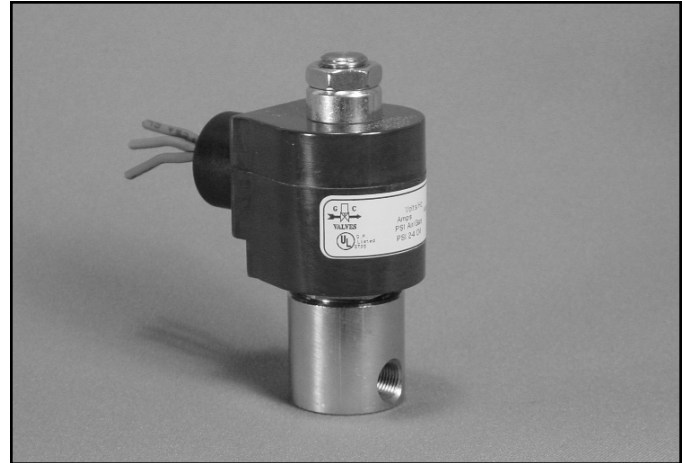


1/8" NPT Stainless Steel Body 2-Way Direct Acting Normally Open



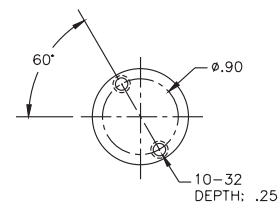
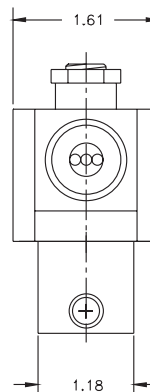
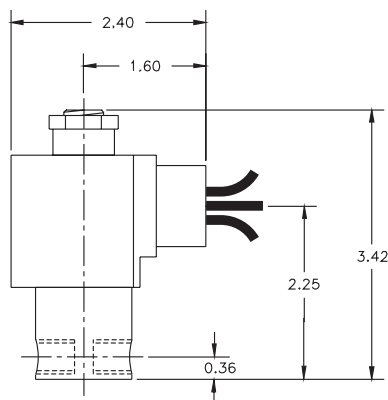
| | | |
|-----------------------|-----------------------|---|
| Materials | Seals: | Nitrile, Viton®, Ethylene Propylene, Teflon®, Rulon |
| | Orifice: | Stainless Steel |
| Electrical | Standard Housing: | Encapsulated Waterproof Conduit (NEMA 4/4X) |
| | Optional Housings: | Metallic Conduit, Explosion-proof (NEMA 7), Grommet, Open Frame, Junction Box (single or dual knockouts), DIN; Contact GC Valves Customer Service for others. |
| | Standard Voltages: | 24, 120, 240 AC 60 Hz; 50 Hz available 6, 12, 24 DC; Contact GC Valves Customer Service for Additional Voltages. |
| | Voltage Tolerance: | ±10% of applicable voltage |
| | Coil Classes: | F, H, N |
| | Standard Lead Length: | 24 inch |
| Operating Temperature | Ambient (Nominal): | 32°F to 125°F |
| Mounting | Position: | Any |
| Approvals* | Agency: | UL Listed, UL Recognized, CSA Approved |

* Not available for all variations

© Registered Trademark of DuPont Co.

Dimensions/Weight

| |
|----------------------|
| Weight (lbs.) |
| 1.1 |

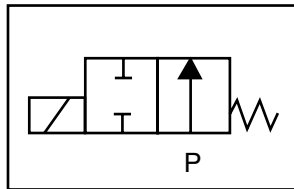




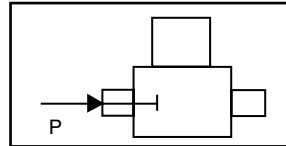
S302 – 1/8" NPT, Stainless Steel Body, Normally Open

Valve Selection List

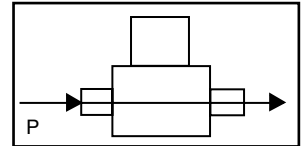
Normally Open



Energized



De-Energized



| Pipe Size NPT | Orifice Size in. | C _V | Minimum | Operating Pressure Differential (psi) | | | | | | | | Max Fluid Temp. °F | Seal Material | Power Consumption (Watts) | | Model Code (120V/60HZ — 110V/50HZ) Shown | |
|----------------------|-------------------------|----------------|---------|---------------------------------------|------|-------|------|-----------|------|--------|------|------------------------------|---------------|---------------------------------|----|--|--|
| | | | | Maximum | | | | | | | | | | | | | |
| | | | | Air/Gas | | Water | | Light Oil | | Steam* | | | | | | | |
| | | | | AC | DC | AC | DC | AC | DC | AC | DC | | | | | | |
| Stainless Steel Body | | | | | | | | | | | | | | | | | |
| 1/8 | 1/32 | .03 | 0 | 2400 | 2400 | 2400 | 2400 | — | — | 150* | 150* | 295 | EPR | 11 | 10 | S302GF02C2AC1 | |
| | 3/64 | .05 | 0 | 600 | 600 | 600 | 600 | — | — | 150* | 150* | 295 | EPR | 11 | 10 | S302GF02C2AC3 | |
| | 1/16 | .10 | 0 | 325 | 325 | 325 | 325 | — | — | 150* | 150* | 295 | EPR | 11 | 10 | S302GF02C2AC5 | |
| | 5/64 | .15 | 0 | 235 | 235 | 2235 | 235 | — | — | 150* | 150* | 295 | EPR | 11 | 10 | S302GF02C2AC7 | |
| | 3/32 | .20 | 0 | 150 | 150 | 150 | 150 | — | — | 150* | 150* | 295 | EPR | 11 | 10 | S302GF02C2AC9 | |
| | 7/64 | .25 | 0 | 125 | 125 | 125 | 125 | — | — | 125* | 125* | 295 | EPR | 11 | 10 | S302GF02C2AD3 | |
| | 1/8 | .30 | 0 | 100 | 100 | 100 | 100 | — | — | 100* | 100* | 295 | EPR | 11 | 10 | S302GF02C2AD5 | |
| | 5/32 | .43 | 0 | 60 | 60 | 60 | 60 | — | — | 60* | 60* | 295 | EPR | 11 | 10 | S302GF02C2AD7 | |
| | 3/16 | .65 | 0 | 40 | 40 | 40 | 40 | — | — | 40* | 40* | 295 | EPR | 11 | 10 | S302GF02C2AE1 | |
| 1/8 | 1/32 | .03 | 0 | 2400 | 2400 | 2400 | 2400 | 2400 | 2400 | — | — | 180 | Nitrile | 11 | 10 | S302GF02N2AC1 | |
| | 3/64 | .05 | 0 | 600 | 600 | 600 | 600 | 600 | 600 | — | — | 180 | Nitrile | 11 | 10 | S302GF02N2AC3 | |
| | 1/16 | .10 | 0 | 325 | 325 | 325 | 325 | 325 | 325 | — | — | 180 | Nitrile | 11 | 10 | S302GF02N2AC5 | |
| | 5/64 | .15 | 0 | 235 | 235 | 235 | 235 | 235 | 235 | — | — | 180 | Nitrile | 11 | 10 | S302GF02N2AC7 | |
| | 3/32 | .20 | 0 | 150 | 150 | 150 | 150 | 150 | 150 | — | — | 180 | Nitrile | 11 | 10 | S302GF02N2AC9 | |
| | 7/64 | .25 | 0 | 125 | 125 | 125 | 125 | 125 | 125 | — | — | 180 | Nitrile | 11 | 10 | S302GF02N2AD3 | |
| | 1/8 | .30 | 0 | 100 | 100 | 100 | 100 | 100 | 100 | — | — | 180 | Nitrile | 11 | 10 | S302GF02N2AD5 | |
| | 5/32 | .43 | 0 | 60 | 60 | 60 | 60 | 60 | 60 | — | — | 180 | Nitrile | 11 | 10 | S302GF02N2AD7 | |
| | 3/16 | .65 | 0 | 40 | 40 | 40 | 40 | 40 | 40 | — | — | 180 | Nitrile | 11 | 10 | S302GF02N2AE1 | |
| 1/8 | 1/32 | .03 | 0 | 2400 | 2400 | 2400 | 2400 | 2400 | 2400 | — | — | 230 | Viton | 11 | 10 | S302GF02V2AC1 | |
| | 3/64 | .05 | 0 | 600 | 600 | 600 | 600 | 600 | 600 | — | — | 230 | Viton | 11 | 10 | S302GF02V2AC3 | |
| | 1/16 | .10 | 0 | 325 | 325 | 325 | 325 | 325 | 325 | — | — | 230 | Viton | 11 | 10 | S302GF02V2AC5 | |
| | 5/64 | .15 | 0 | 235 | 235 | 235 | 235 | 235 | 235 | — | — | 230 | Viton | 11 | 10 | S302GF02V2AC7 | |
| | 3/32 | .20 | 0 | 150 | 150 | 150 | 150 | 150 | 150 | — | — | 230 | Viton | 11 | 10 | S302GF02V2AC9 | |
| | 7/64 | .25 | 0 | 125 | 125 | 125 | 125 | 125 | 125 | — | — | 230 | Viton | 11 | 10 | S302GF02V2AD3 | |
| | 1/8 | .30 | 0 | 100 | 100 | 100 | 100 | 100 | 100 | — | — | 230 | Viton | 11 | 10 | S302GF02V2AD5 | |
| | 5/32 | .43 | 0 | 60 | 60 | 60 | 60 | 60 | 60 | — | — | 230 | Viton | 11 | 10 | S302GF02V2AD7 | |
| | 3/16 | .65 | 0 | 40 | 40 | 40 | 40 | 40 | 40 | — | — | 230 | Viton | 11 | 10 | S302GF02V2AE1 | |

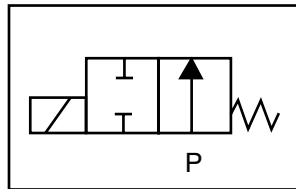
* Class H Coil Recommended for Steam and Other High Temperature Applications

S302 – 1/8" NPT, Stainless Steel Body, Normally Open

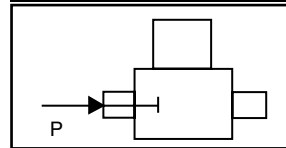


Valve Selection List

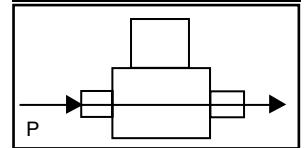
Normally Open



Energized



De-Energized



| Pipe Size NPT | Orifice Size in. | C _V | Minimum | Operating Pressure Differential (psi) | | | | | | | | Max Fluid Temp. °F | Seal Material | Power Consumption (Watts) | | Model Code |
|----------------------|-------------------------|----------------|---------|---------------------------------------|------|-------|------|-----------|------|--------|------|------------------------------|---------------|----------------------------------|----|---------------|
| | | | | Maximum | | | | | | | | | | (120V/60HZ — 110V/50HZ) Shown | | |
| | | | | Air/Gas | | Water | | Light Oil | | Steam* | | | | | | |
| | | | | AC | DC | AC | DC | AC | DC | AC | DC | | | | | |
| Stainless Steel Body | | | | | | | | | | | | | | | | |
| 1/8 | 1/32 | .03 | 0 | 2400 | 2400 | 2400 | 2400 | 2400 | 2400 | 150* | 150* | 366 | Rulon | 11 | 10 | S302GF02R2AC1 |
| | 3/64 | .05 | 0 | 600 | 600 | 600 | 600 | 600 | 600 | 150* | 150* | 366 | Rulon | 11 | 10 | S302GF02R2AC3 |
| | 1/16 | .10 | 0 | 325 | 325 | 325 | 325 | 325 | 325 | 150* | 150* | 366 | Rulon | 11 | 10 | S302GF02R2AC5 |
| | 7/64 | .15 | 0 | 235 | 235 | 235 | 235 | 235 | 235 | 150* | 150* | 366 | Rulon | 11 | 10 | S302GF02R2AC7 |
| | 3/32 | .20 | 0 | 150 | 150 | 150 | 150 | 150 | 150 | 150* | 150* | 366 | Rulon | 11 | 10 | S302GF02R2AC9 |
| | 7/64 | .25 | 0 | 125 | 125 | 125 | 125 | 125 | 125 | 125* | 125* | 366 | Rulon | 11 | 10 | S302GF02R2AD3 |
| | 1/8 | .30 | 0 | 100 | 100 | 100 | 100 | 100 | 100 | 100* | 100* | 366 | Rulon | 11 | 10 | S302GF02R2AD5 |
| | 5/32 | .43 | 0 | 60 | 60 | 60 | 60 | 60 | 60 | 60* | 60* | 366 | Rulon | 11 | 10 | S302GF02R2AD7 |
| | 3/16 | .65 | 0 | 40 | 40 | 40 | 40 | 40 | 40 | 40* | 40* | 366 | Rulon | 11 | 10 | S302GF02R2AE1 |
| 1/8 | 1/32 | .03 | 0 | 2400 | 2400 | 2400 | 2400 | 2400 | 2400 | 150* | 150* | 366 | Teflon | 11 | 10 | S302GF02T2AC1 |
| | 3/64 | .05 | 0 | 600 | 600 | 600 | 600 | 600 | 600 | 150* | 150* | 366 | Teflon | 11 | 10 | S302GF02T2AC3 |
| | 1/16 | .10 | 0 | 325 | 325 | 325 | 325 | 325 | 325 | 150* | 150* | 366 | Teflon | 11 | 10 | S302GF02T2AC5 |
| | 5/64 | .15 | 0 | 235 | 235 | 235 | 235 | 235 | 235 | 150* | 150* | 366 | Teflon | 11 | 10 | S302GF02T2AC7 |
| | 3/32 | .20 | 0 | 150 | 150 | 150 | 150 | 150 | 150 | 150* | 150* | 366 | Teflon | 11 | 10 | S302GF02T2AC9 |
| | 7/64 | .25 | 0 | 125 | 125 | 125 | 125 | 125 | 125 | 125* | 125* | 366 | Teflon | 11 | 10 | S302GF02T2AD3 |
| | 1/8 | .30 | 0 | 100 | 100 | 100 | 100 | 100 | 100 | 100* | 100* | 366 | Teflon | 11 | 10 | S302GF02T2AD5 |
| | 5/32 | .43 | 0 | 60 | 60 | 60 | 60 | 60 | 60 | 60* | 60* | 366 | Teflon | 11 | 10 | S302GF02T2AD7 |
| | 3/16 | .65 | 0 | 40 | 40 | 40 | 40 | 40 | 40 | 40* | 40* | 366 | Teflon | 11 | 10 | S302GF02T2AE1 |

* Class H Coil Recommended for Steam and Other High Temperature Applications



S302 – 1/8" NPT, Stainless Steel Body, Normally Open

Part Numbering

| 1 | 2 | 3 | 4 | 5 | 6 | 7 | 8 | 9 | 10 | 11 | 12 | 13 |
|--|--------------|--------------|------------------|--------------|--------------------------|----------------------|--------------|---|--------------------|-----------------|---|--------------|
| <div>S</div> | <div>3</div> | <div>0</div> | <div>2</div> | <div>G</div> | <div>F</div> | <div>0</div> | <div>2</div> | <div>C</div> | <div>2</div> | <div>A</div> | <div>C</div> | <div>1</div> |
| Series | | | Operating Mode | Housing* | Coil Class* | Voltage* | | Seal Material | Body Material | Pipe Connection | Orifice Size | |
| S30 | | | 2: Normally Open | G: Conduit | F: Class F H: Class H | 02: 120/60 110/50 | | C: EPR N: Nitrile V: Viton R: Rulon T: Teflon | 2: Stainless Steel | A: 1/8" NPT | C1: 1/32" C3: 3/64" C5: 1/16" C9: 3/32" D5: 1/8" E1: 3/16" | |
| * See the "Engineering Guide" for additional voltages, variations and options. | | | | | | | | | | | | |

Coil Data

| Coil Family | |
|-------------|------|
| Type | Size |
| All | S4 |

| | | | |
|--------------------|---------|----|----|
| Frequency (Hz) | | 60 | 50 |
| Nominal Power (VA) | Inrush | 46 | 46 |
| | Holding | 22 | 25 |