



Multi-turn operated
chemical / slurry valves

AV2 series

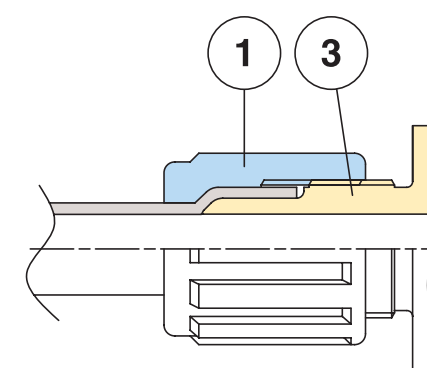
Pat. Pend.

Multi-turn valves that easily open and shut
by manual turning of the handle.

AV2 series Connection Type

Flare Type (fine-thread)

- ① Nut
- ③ Body



Multi-turn operated chemical / slurry valves

AV2-3M6-4PF



Ordering Information

AV2-3M6-4PF

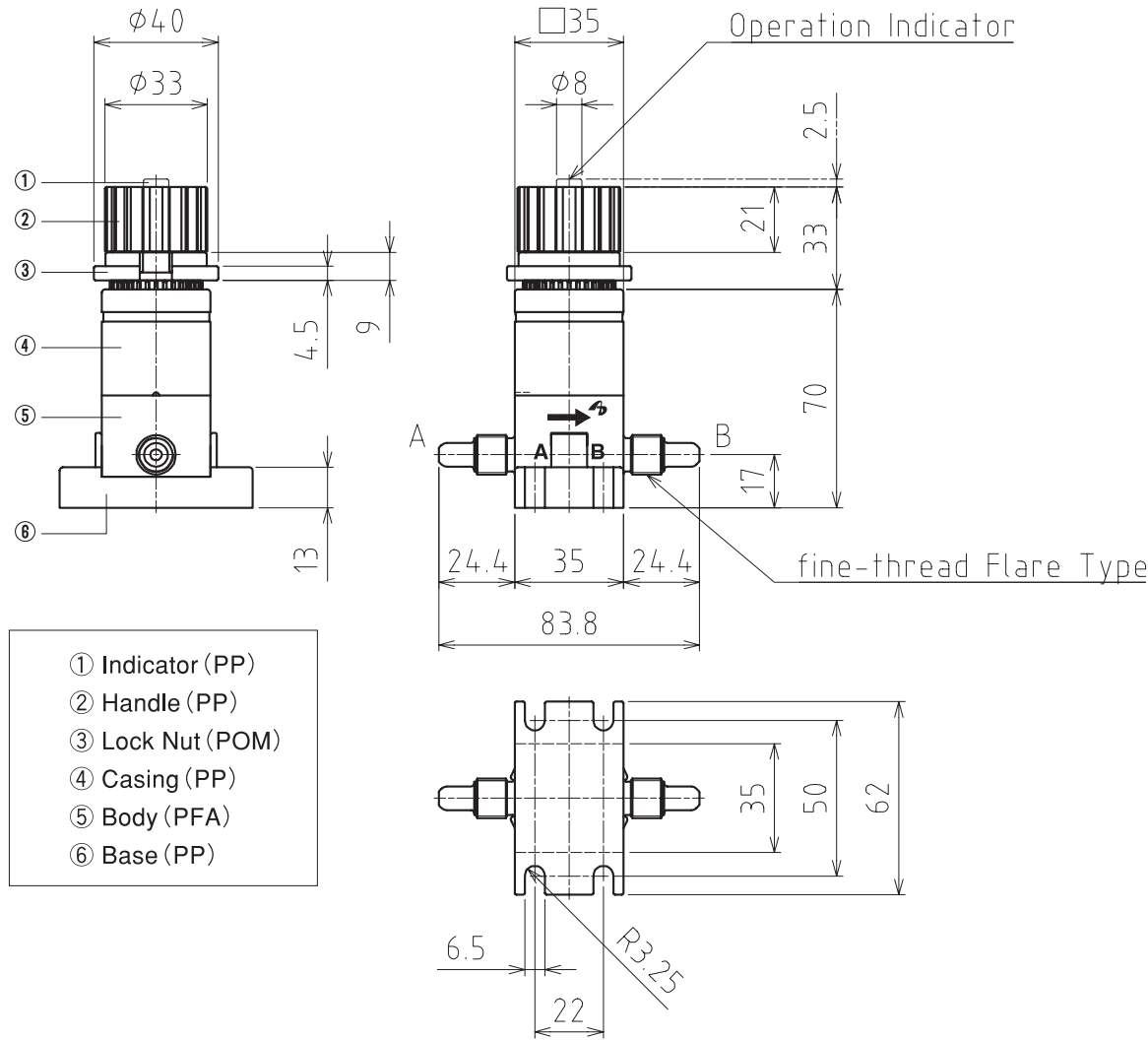
Connection Size Flare Fitting

Specifications

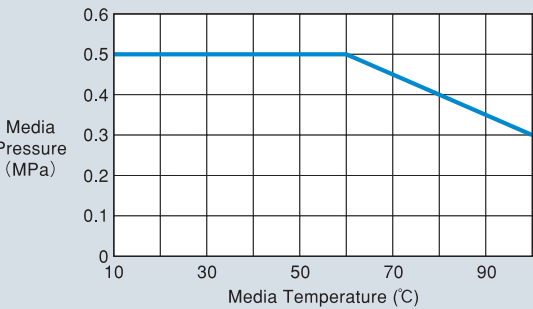
| | |
|---------------------|------------------------------------------|
| Model Code | AV2-3M6-4PF |
| Orifice | φ4 |
| Connection Size | 3.97×6.35 |
| Media | Liquid Chemicals |
| Media Pressure | A→B : 0.5MPa (MAX) B→A : 0.5MPa (MAX) |
| Media Temperature | 10~100°C |
| Ambient Temperature | 10~60°C |
| Operational Mode | Multi-turn (manual) |
| Wetted Material | Diaphragm : PTFE Valve body : PFA |
| Note | Position Indicator |

*Specifications are subject to change without notice.

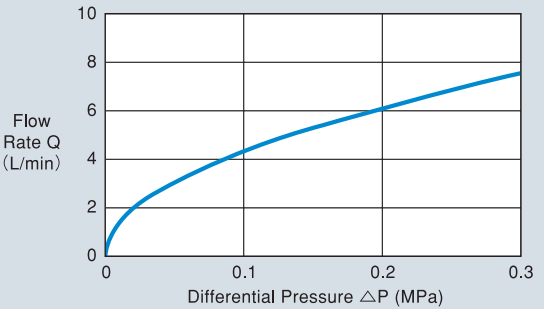
Product Drawing



Media Pressure / Temperature (A→B/B→A)



Flow Rate / Pressure Drop - Cv: 0.3



Multi-turn operated chemical / slurry valves

AV2-3M6-6PF



Ordering Information

AV2-3M6-6PF

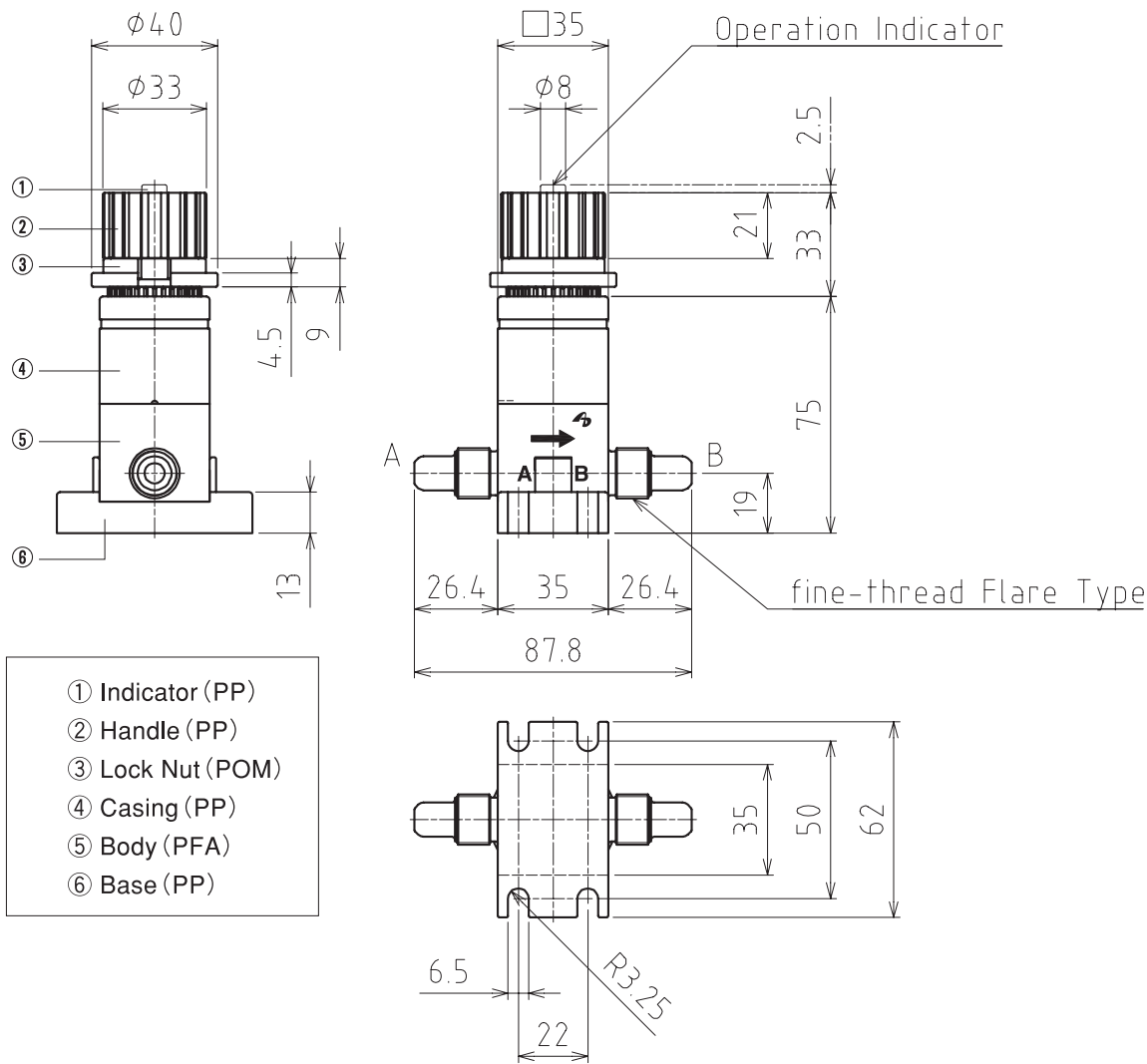
Connection Size Flare Fitting

Specifications

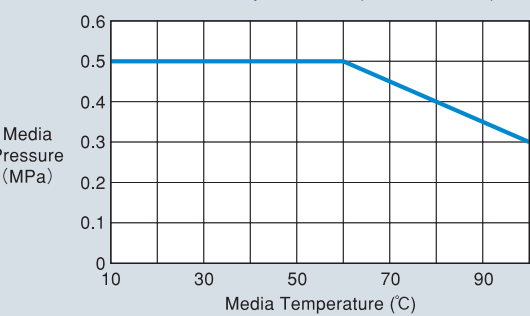
| | |
|---------------------|------------------------------------------|
| Model Code | AV2-3M6-6PF |
| Orifice | φ6.4 |
| Connection Size | 6.35×9.53 |
| Media | Liquid Chemicals |
| Media Pressure | A→B : 0.5MPa (MAX) B→A : 0.5MPa (MAX) |
| Media Temperature | 10~100°C |
| Ambient Temperature | 10~60°C |
| Operational Mode | Multi-turn (manual) |
| Wetted Material | Diaphragm : PTFE Valve body : PFA |
| Note | Position Indicator |

*Specifications are subject to change without notice.

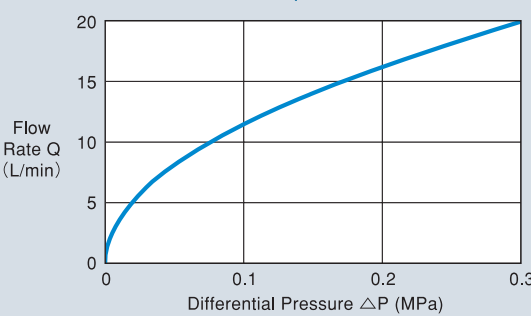
Product Drawing



Media Pressure / Temperature (A→B/B→A)



Flow Rate / Pressure Drop - Cv: 0.8



Multi-turn operated chemical / slurry valves

AV2-3M6-8PF



Ordering Information

AV2-3M6-8PF

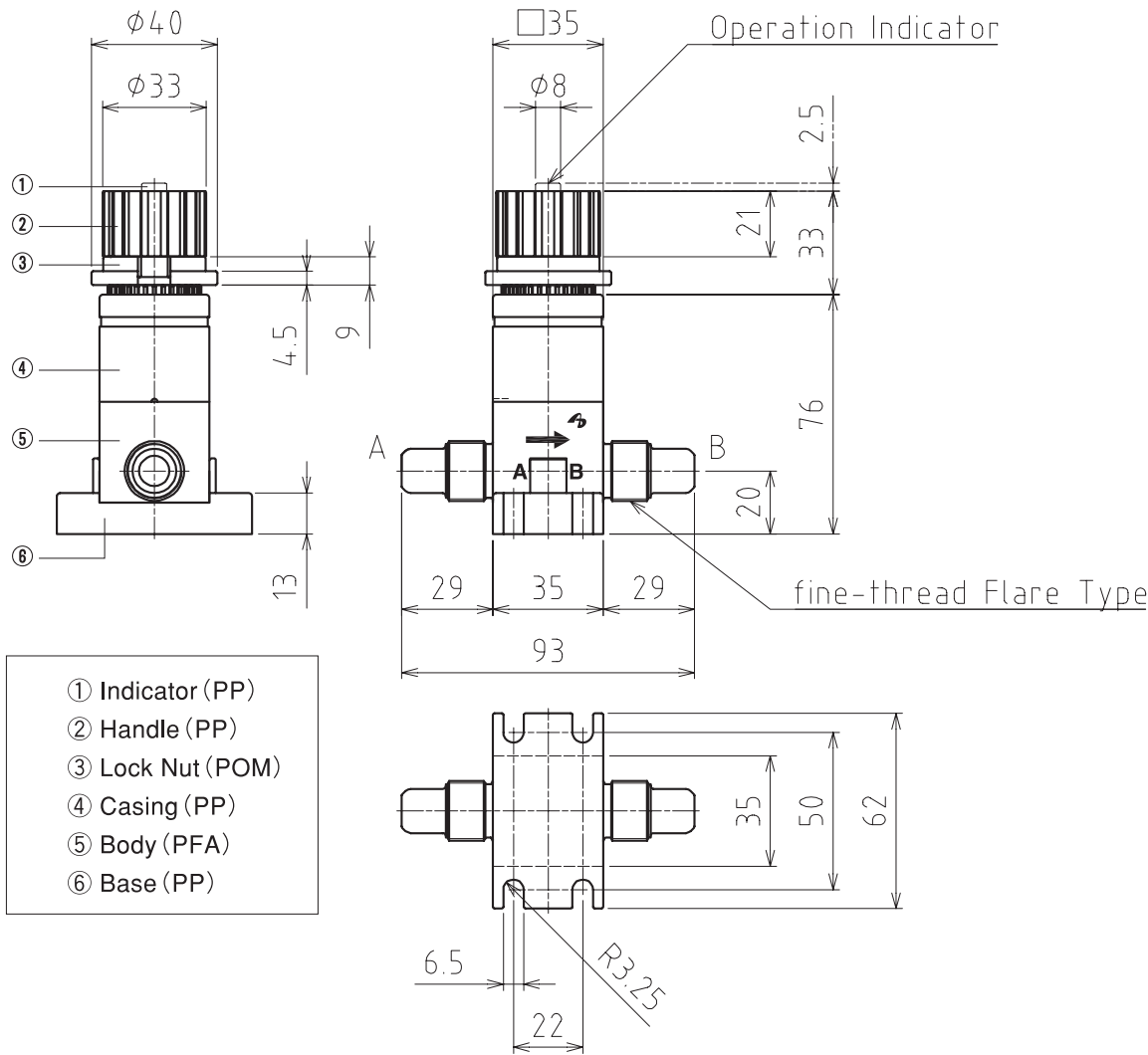
Connection Size Flare Fitting

Specifications

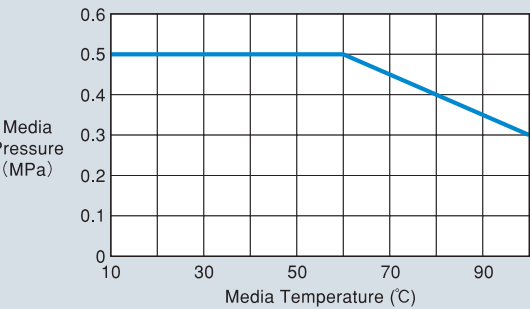
| | |
|---------------------|------------------------------------------|
| Model Code | AV2-3M6-8PF |
| Orifice | φ10 |
| Connection Size | 9.53×12.7 |
| Media | Liquid Chemicals |
| Media Pressure | A→B : 0.5MPa (MAX) B→A : 0.5MPa (MAX) |
| Media Temperature | 10~100°C |
| Ambient Temperature | 10~60°C |
| Operational Mode | Multi-turn (manual) |
| Wetted Material | Diaphragm : PTFE Valve body : PFA |
| Note | Position Indicator |

*Specifications are subject to change without notice.

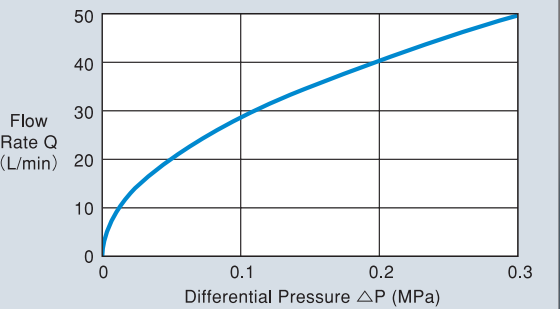
Product Drawing



Flow Rate / Pressure Drop - Cv: 2.0



Flow Rate / Pressure Drop - Cv: 2.0



Multi-turn operated chemical / slurry valves

AV2-4M6-12PF



Ordering Information

AV2-4M6-12PF

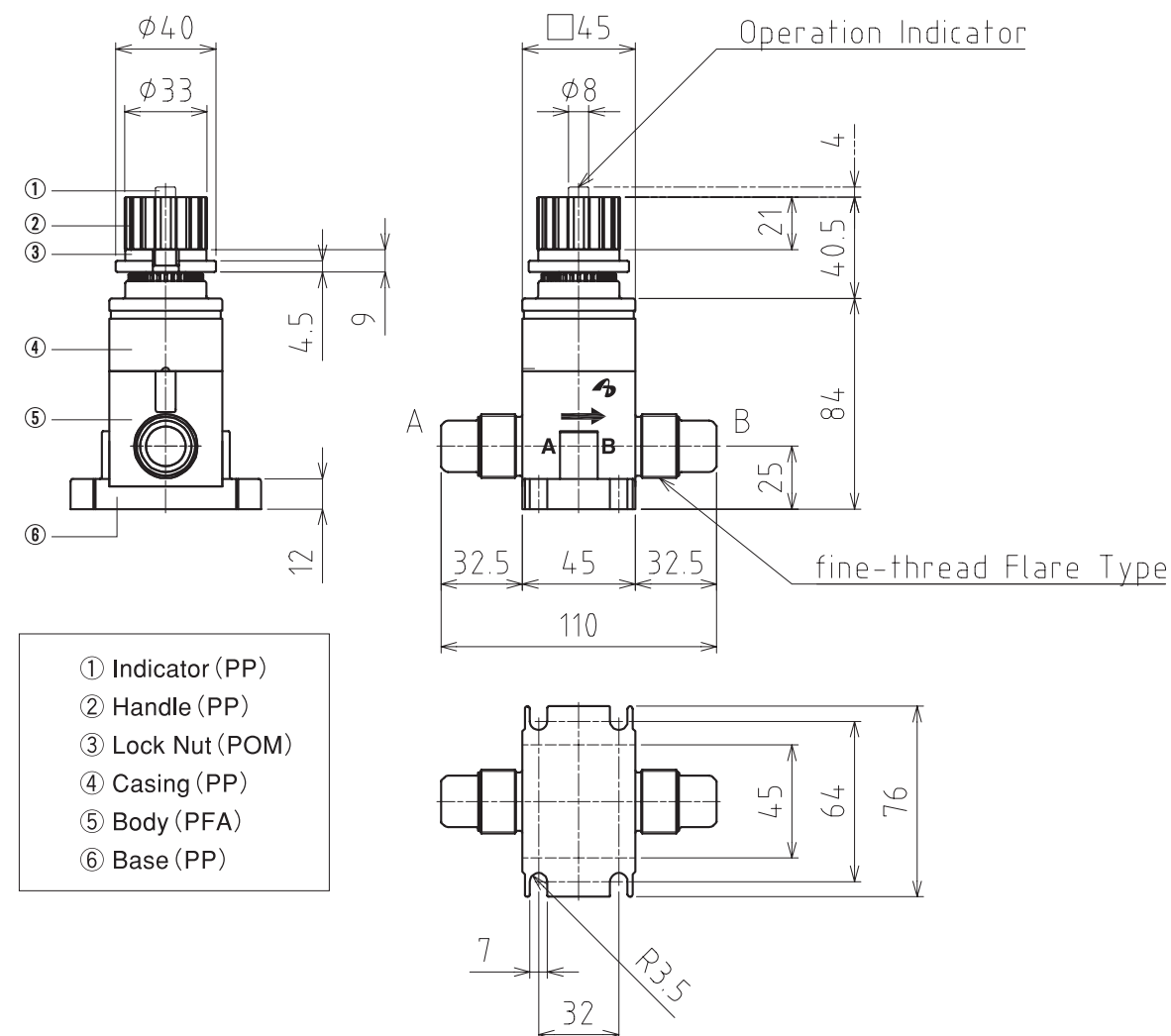
Connection Size Flare Fitting

Specifications

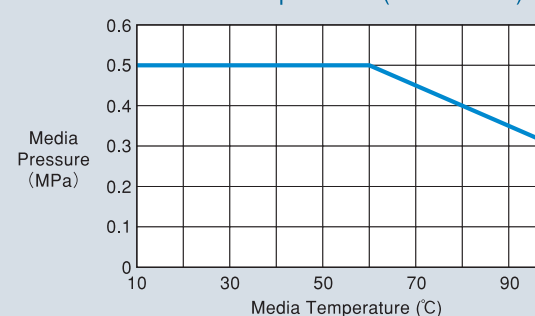
| | |
|---------------------|------------------------------------------|
| Model Code | AV2-4M6-12PF |
| Orifice | φ16 |
| Connection Size | 15.88×19.05 |
| Media | Liquid Chemicals |
| Media Pressure | A→B : 0.5MPa (MAX) B→A : 0.5MPa (MAX) |
| Media Temperature | 10~100°C |
| Ambient Temperature | 10~60°C |
| Operational Mode | Multi-turn (manual) |
| Wetted Material | Diaphragm : PTFE Valve body : PFA |
| Note | Position Indicator |

*Specifications are subject to change without notice.

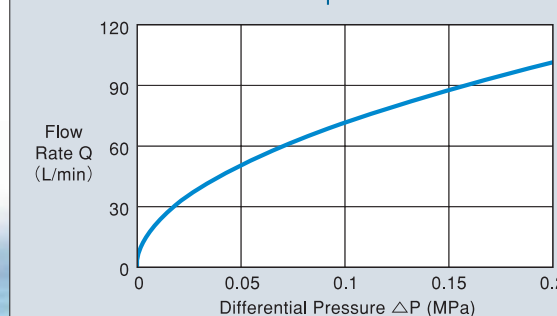
Product Drawing



Media Pressure / Temperature (A→B/B→A)



Flow Rate / Pressure Drop - Cv: 5.0



Multi-turn operated chemical / slurry valves

AV2-6M6-16PF



Ordering Information

AV2-6M6-16PF

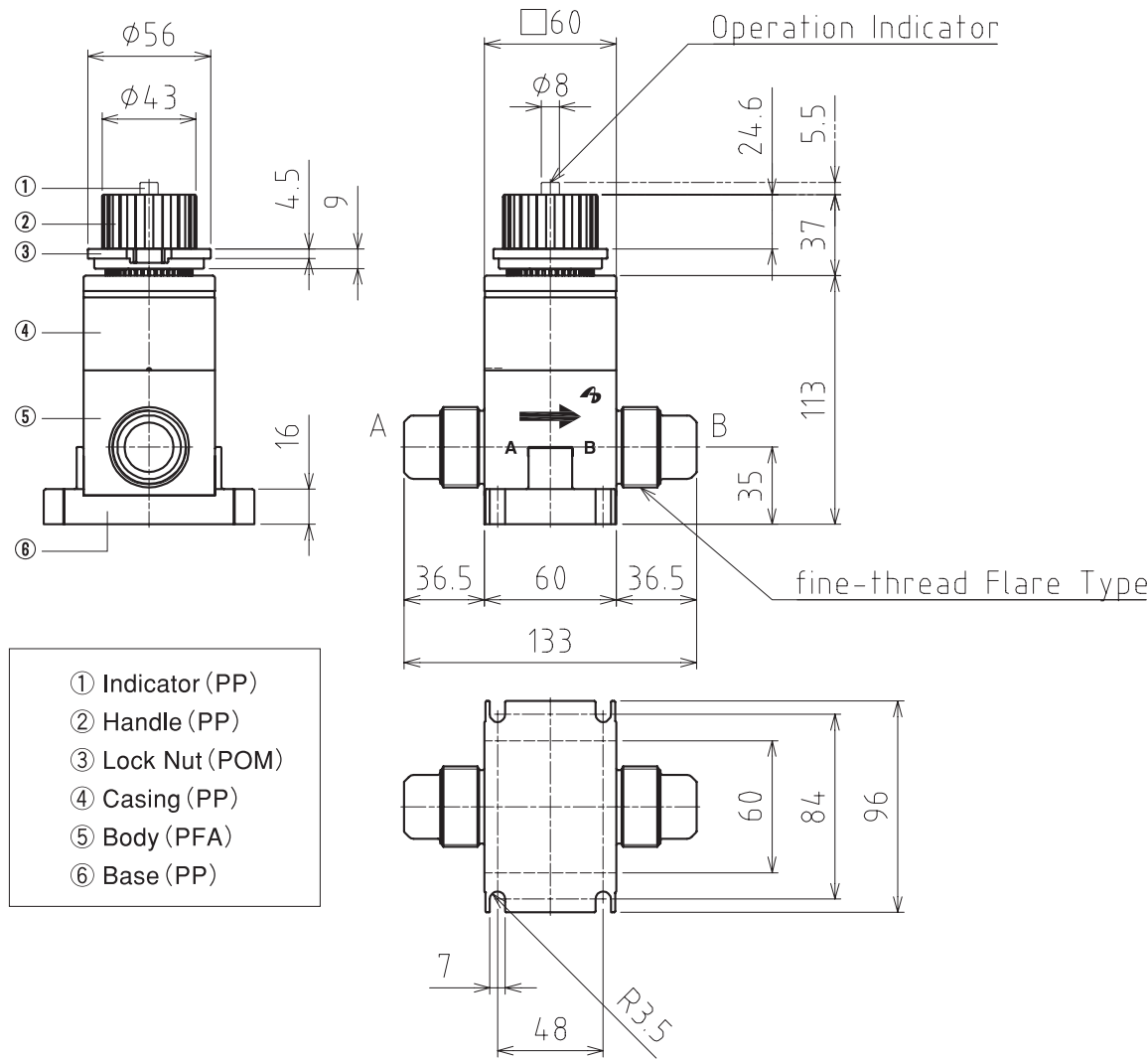
Connection Size Flare Fitting

Specifications

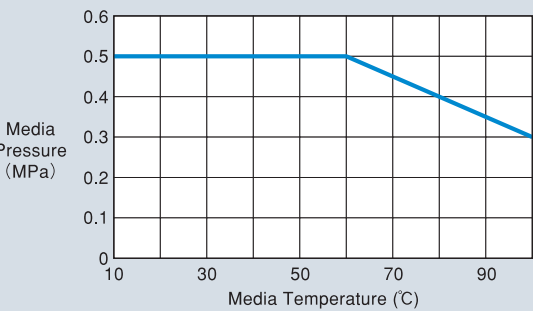
| | |
|---------------------|------------------------------------------|
| Model Code | AV2-6M6-16PF |
| Orifice | φ22 |
| Connection Size | 22.23×25.4 |
| Media | Liquid Chemicals |
| Media Pressure | A→B : 0.5MPa (MAX) B→A : 0.5MPa (MAX) |
| Media Temperature | 10~100°C |
| Ambient Temperature | 10~60°C |
| Operational Mode | Multi-turn (manual) |
| Wetted Material | Diaphragm : PTFE Valve body : PFA |
| Note | Position Indicator |

*Specifications are subject to change without notice.

Product Drawing



Media Pressure / Temperature (A→B/B→A)



Flow Rate / Pressure Drop - Cv: 10.6

