



M1G055 Series

Motors

1/50 HP Refrigeration Fan Motor (ESM)

- EC-motor with completely integrated electronics
- AC-line operation
- Proven external rotor motor principle
- Power output up to 14 Watt at 1550 RPM
- Moisture protection suitable for commercial refrigeration
- Ball bearings
- High life expectancy > 40,000 hours

Part Number

M1G055-BD97-47

CFM
@ 0

338*

VAC

115

Hertz

50/60

Power
Output (W)

14

Max Amb.
Temp C

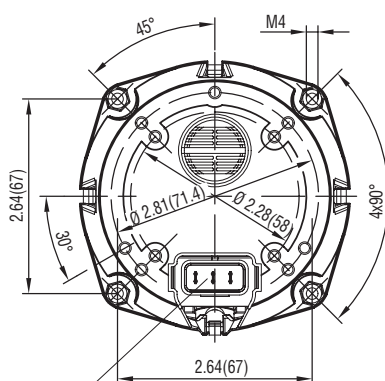
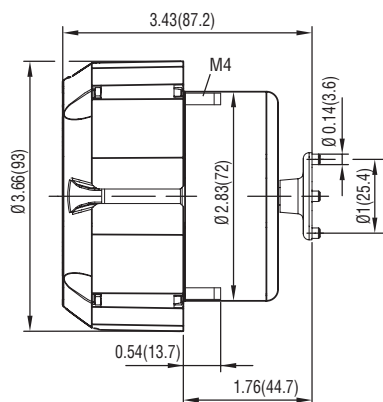
40

Speed
(RPM)

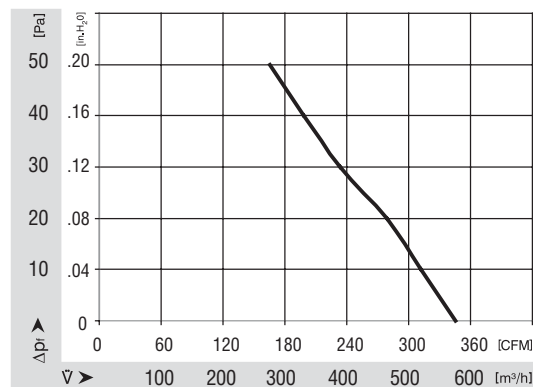
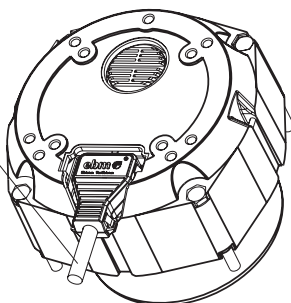
1550

Wgt.
(lbs)

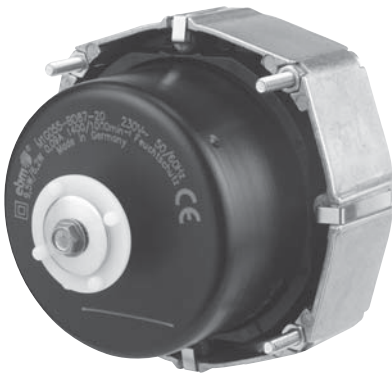
1.87



incl. mains cable with plug (450 mm length)



*Note: Measured with 5-bladed sheet metal impeller 9-inch/22°



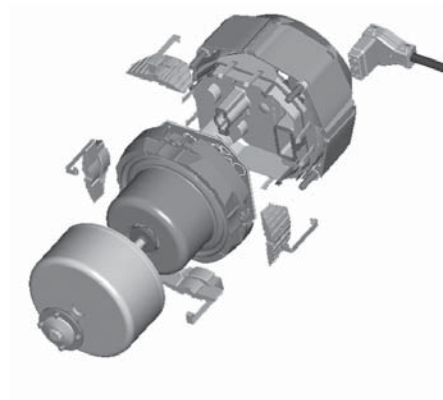
M1G055 Series cont. Motors

1/50 HP Refrigeration Fan Motor (ESM)

- Substitutes standard motors due to common footprint
- Use with standard sheet metal impellers
- Complete range of accessories:
 - Flat fan guards
 - Basket fan guards
 - Wall-rings with motor mounts

Technical Data

➤ Speed:	1550 RPM
➤ Rated Voltage:	115 VAC
➤ Mains Frequency:	50/60 Hz
➤ Approvals:	CE, VDE EN60335, UL1004
➤ Interference Emission:	EN50081-1
➤ Interference Immunity:	EN61000-6-2
➤ Protection Class:	2
➤ Type of Protection:	IP44
➤ Weight:	1.87 lbs (0.85 kg)
➤ Ambient Temperature:	-30° C - 40° C



Optimized Efficiency

- Efficiency > 65 %
- Only 1/3 of the power input of shaded-pole motors
- Little heat load
- Quick pay back

Comparison in efficiency curves
of the ESM and standard
shaded-pole motor

