

Multi-axis controller V6 / VV6



The multi-axis controller V6 / VV6 is available in either single-axis or multi-axis options and is a robust controller used commonly in crane and hoisting applications. The modular design and many possibilities of combination with our handles enables the switching device to be used universally. The V6 / VV6 is resistant to oil, maritime conditions e.g. offshore / vessels, UV radiation typically from the sun.

Technical data

Mechanical life V6	10 million operating cycles
Mechanical life VV6	20 million operating cycles
Operation temperature	-40°C to +85°C
Degree of protection	up to IP54 front



1

	V62L	S5	P	T	-01 Z P	+03A R C	-A05 P134	+A110 C01	-X
Basic unit									
V62L 2-axis left									
Control-handle extended									
S5 -20 mm									
Gate									
P Cross gate									
Grip / palm grip									
T Dead man									
Axis 1 (direction 1-2)									
01 2 contacts (2A 250 V AC15)									
Z Spring return									
P Potentiometer									
Axis 2 (direction 3-4)									
03A 6 contacts (4A 250 V AC15)									
R Friction brake									
C Opto-electronical encoder									
Description axis 1 (direction 1-2)									
A05 Arrangement MS21									
P134 Potentiometer T396 2 x 5 kOhm									
Description axis 2 (direction 3-4)									
A110 Arrangement MS24-0									
C01 OEC 2-1-1									
Special model									
X Special / customer specified									

Combination possibilities with our handles



V62L S5 P T -01 Z P +03A R C -A05 P134 +A110 C01 -X

Basic unit

V61L	1-axis left
V61R	1-axis right
V61.1	1-axis
V64.1	1-axis
V62L	2-axis left
V62R	2-axis right
V64	2-axis

reinforced version

VV61L	1-axis left
VV61R	1-axis right
VV61.1	1-axis
VV64.1	1-axis
VV62L	2-axis left
VV62R	2-axis right
VV64	2 axis

Control-handle extended

Standard 180 mm*

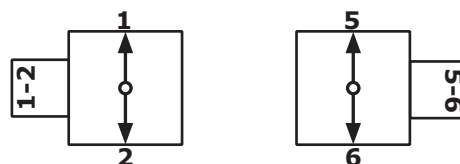
S3	-40 mm
S5	-20 mm
S8	+20 mm

**Only available in combination with handle!*

Gate

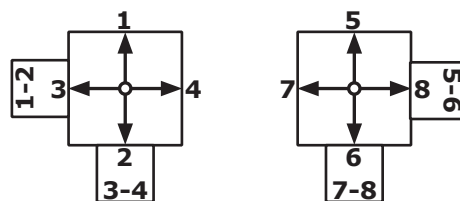
P	Cross gate
P X	Special gate

Identification of the installation variants with switching directions:



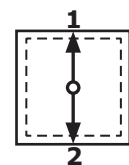
V61L/VV61L

V61R/VV61R

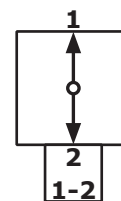


V62L/VV62L

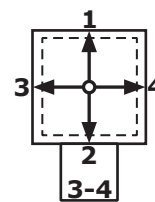
V62R/VV62R



V64.1/VV64.1



V61.1/VV61.1



V64/VV64

V62L S5 P T -01 Z P +03A R C -A05 P134 +A110 C01 -X

Grip / palm grip

	Knob (included in basic unit!)
M	Mechanical zero interlock
MN	Mechanical zero interlock (push down)
T	Dead man
MT*	Mechanical zero interlock + dead man
H	Signal button
MH	Mechanical zero interlock + signal button
D	Push button
MD*	Mechanical zero interlock + push button
DV	Flush push button
MDV*	Mechanical zero interlock + flush push button

*Only possible with VV6!

B... Palm grip B... (see Palm grip page 157)

Attention! When usage some handles reduces the deflection angle to 28 degrees!

V62L S5 P T -01 Z P +03A R C -A05 P134 +A110 C01 -X

Axis 1: direction 1-2 left / direction 5-6 right

(Standard contacts gold-plated 2A 250 V AC15)

01	<input type="checkbox"/>	2 contacts	Standard contact - arrangement see page 140	
02	<input type="checkbox"/>	4 contacts	z.B.	
03	<input type="checkbox"/>	6 contacts	A980	MS00
04	<input type="checkbox"/>	8 contacts	A05	MS21
05	<input type="checkbox"/>	10 contacts	A0500	MS21-00
06	<input type="checkbox"/>	12 contacts	A110	MS24-0
		<input checked="" type="checkbox"/> = silver contacts (4A 250V AC15)	A99 contact - arrangement according customer request	

Z Spring return

R Friction brake

(P) Possibility of mounting potentiometer and encoder (Gessmann-types)

P	Potentiometer	P131	T396 2 x 0,5 kOhm	I max. 1 mA
		P132	T396 2 x 1 kOhm	I max. 1 mA
		P133	T396 2 x 2 kOhm	I max. 1 mA
		P134	T396 2 x 5 kOhm	I max. 1 mA
		P135	T396 2 x 10 kOhm	I max. 1 mA

More potentiometers on request!

C Encoder C... Encoder see page 146

V62L S5 P T -01 Z P +03A R C -A05 P134 +A110 C01 -X

Axis 2: direction 3-4 left / Direction 7-8 right

(not applicable for V/VV61, V/VV61.1, V/VV64.1)

(Standard contacts gold-plated 2A 250 V AC15)

01	<input type="checkbox"/>	2 contacts	Standard contact - arrangement see page 140	
02	<input type="checkbox"/>	4 contacts	z.B.	
03	<input type="checkbox"/>	6 contacts	A980	MS00
04	<input type="checkbox"/>	8 contacts	A05	MS21
05	<input type="checkbox"/>	10 contacts	A0500	MS21-00
06	<input type="checkbox"/>	12 contacts	A110	MS24-0
		<input checked="" type="checkbox"/> = Silver contacts (4A 250 V AC15)	A99 contact - arrangement according customer request	

Z Spring return

R Friction brake

(P) Possibility of mounting potentiometer and encoder (Gessmann-types)

P	Potentiometer	P131	T396 2 x 0,5 kOhm	I max. 1 mA
		P132	T396 2 x 1 kOhm	I max. 1 mA
		P133	T396 2 x 2 kOhm	I max. 1 mA
		P134	T396 2 x 5 kOhm	I max. 1 mA
		P135	T396 2 x 10 kOhm	I max. 1 mA
		More potentiometers on request!		

C Encoder C... Encoder see page 146

V62L S5 P T -01 Z P +03A R C -A05 P134 +A110 C01 -X

Special model

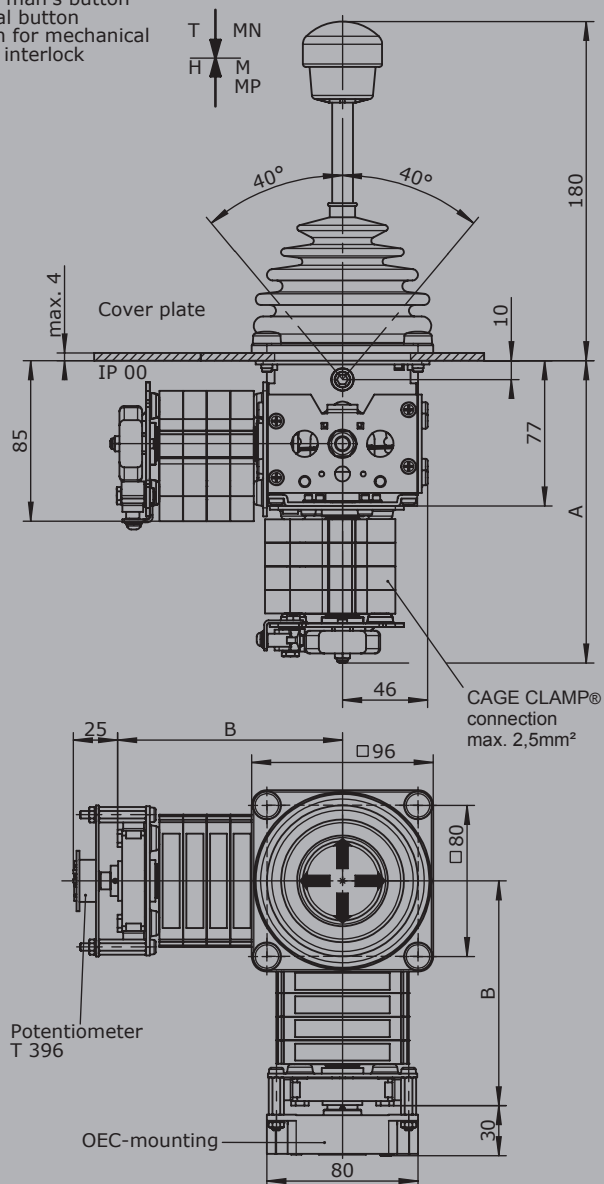
X Special /customer specified

Attachments

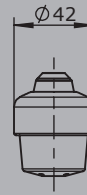
Indicating labels

Indicating labels with engraving

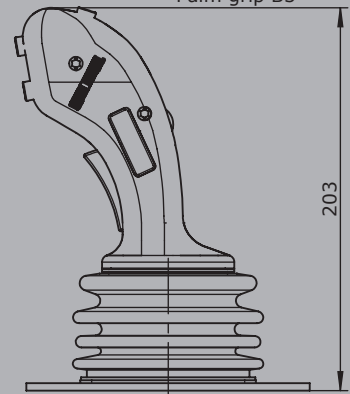
T = Dead man's button
H = Signal button
M = Latch for mechanical
zero interlock



Knob solid
D= Push button

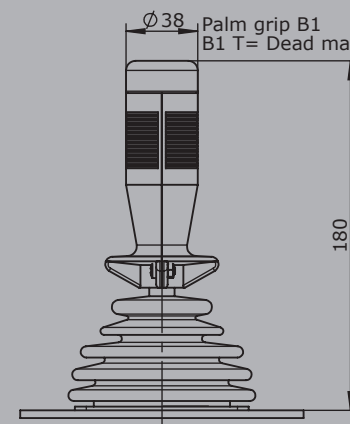


Palm grip B3

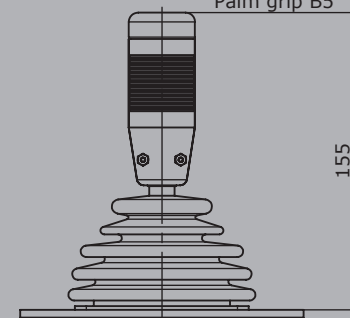


Ø 38

Palm grip B1
B1 T= Dead man's button



Palm grip B5



Type	No. of contacts	Dim. A	Dim. B
01	2	119	82
02	4	131	94
03	6	144	107
04	8	156	119
05	10	169	132
06	12	181	144