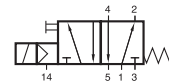


MH 510 501 G/MH 510 701 G

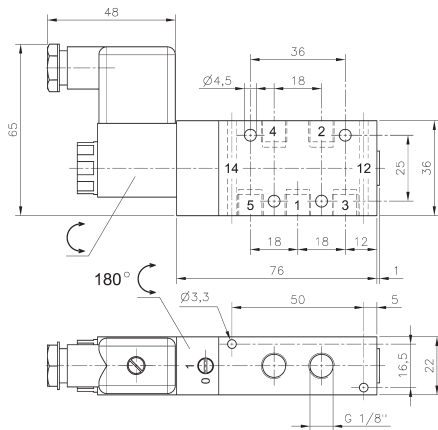
2.5.2.1.5
page 101



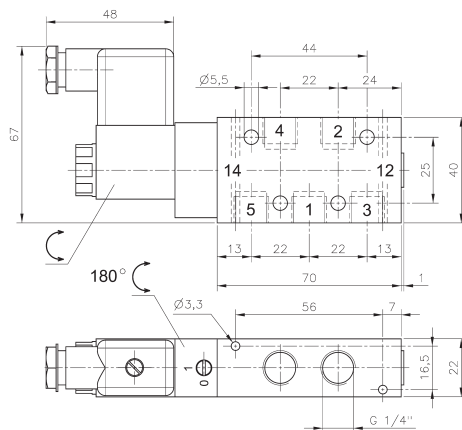
MH 510 501 G
MH 510 701 G
MH 510 701 G NPT



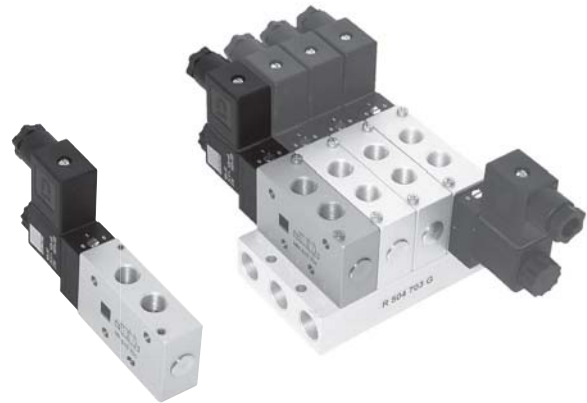
MEH 511 501 G
MEH 511 701 G



MH 510 501 G



MH 510 701 G/MH 510 701 G NPT



5/2-way solenoid valve actuated by permanent signal and equipped with air spring return.

Valves can either be used in-line or on a manifold plate. Manifolds for valves type 501 G are displayed on page 2.6.2.2, manifolds for valves type 701 G are displayed on page 2.6.2.3.

Available with solenoid operators:
230V/50Hz, 110V/50Hz, 24V/50Hz, 48V=,
24V=, 12V=.

Valves are generally equipped with manual override. If requested without manual override please order M 510 ____.


Valves are also available with external pilot feed.

Type: MEH 511 ____ G.

Port 14: M5.

Minimum actuation pressure: 3 bar.

Version for vacuum on request.

Type	Port size	Air flow	Operating press.	Power cons.	Weight
MH 510 501 G	G 1/8"	650 l/min	2 - 10 bar	3 W = / 5 VA ~	0,23 kg 
MH 510 701 G	G 1/4"	1250 l/min	2 - 10 bar	3 W = / 5 VA ~	0,25 kg  MK
MH 510 701 G NPT	1/4" NPT	1250 l/min	2 - 10 bar	3 W = / 5 VA ~	0,25 kg 