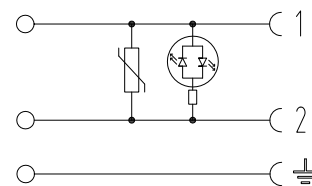
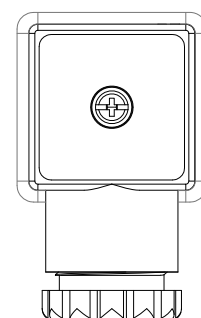
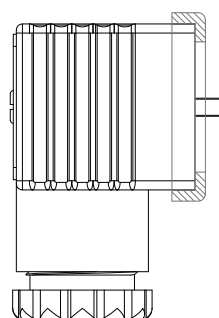
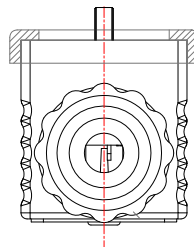
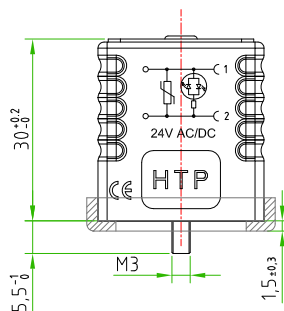
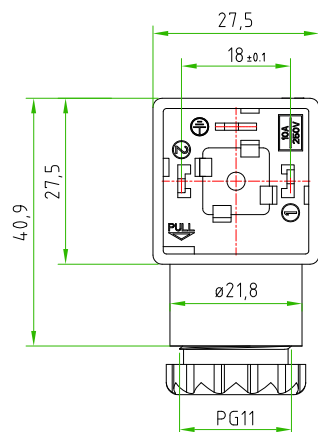
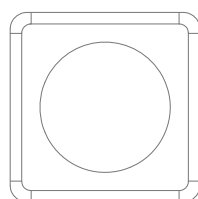


Rev.	Modify	Date	Firma	Approved

Rev.	Modify	Date	Firma	Approved

Rev.	Modify	Date	Signed	Approved

CUSTOMER APPROVAL	
SIGNATURE	DATE
PLEASE SIGN AND RETURN	



CONNECTOR FEATURES	PRODUCT TYPE	EN175301-803 FORM A FIELD ATTACHABLE.
	HOUSING MATERIAL/COLOUR	PA66 /TRANSPARENT
	PRESS-CABLE MATERIAL/COLOUR	PA66 /BLACK
	INTRENAL CORE MATERIAL/COLOUR	PA66 /BLACK
	HEIGHT HOUSING	30mm
	CONTACTS SPACING	18mm
	CONTACTS TYPE	SCREW CONTACTS(with protection plate)
	NUMBER OF POLES	2POLES+EARTH
	EARTH POSITIONING	H.12 (TURNABLE)
	CABLE EXIT	PG9/11 UNIFIED
	SUITABLE CABLE	FROM ø6mm TO ø10mm
	MAX.CONDUCTOR SIZE	1,5mm ²
	PROTECTION CLASS	IP67
	CIRCUIT TYPE	BIPOLAR RED LED+VARISTOR
	RATED VOLTAGE	24V AC/DC
	CONNECTOR TEMPERATURE RANGE	from -40°C to +90°C
	GASKET TYPE	PROFIED NBR
	FIXING SCREW	M3X0,5 L=32,5mm
	CONNECTOR WITH H.T.P. LOGO	

Designer	SUGLIANI R.	Date	2016-04-21	Tolerance	±0,2	Units	mm	Series	EN175301-803 (form A)	Drawing n. 1/1
Approved	CIMMINO L.	Date	2016-04-21	Scale	1:1	Size	A4	Customer code:		
<div> <div> </div> <div> DESCRIPTION SQUARE CONNECTOR EN175301-803 FORM A, FIELD ATTACHABLE, 2P.+PE, WITH BIPOLAR RED LED+VARISTOR, 24V AC/DC, TRANSPARENT HOUSING, PG9/11 unified. CONNECTOR WITH H.T.P. LOGO. </div> </div>										H.T.P. PART NUMBER G1TU2VL1