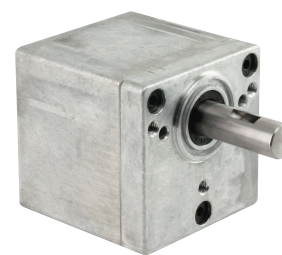


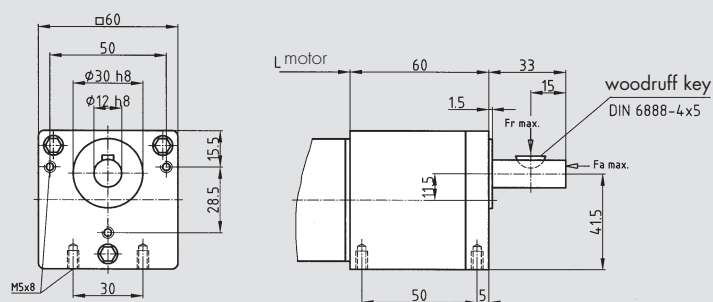
Spur gear

Properties:	General:	Multi-stage, closed spur gear For use in combination with our motors. Single gear with ball-bearing ingoing shaft (2 bearings back-to-back) Lifetime grease lubrication
	Housing:	Zinc-diecast system housing User-defined installation Mounting possibility from all accessible sides
	Tooth system tech.:	Gear-pinion combinations on a common needle bearing Ball bearing end shaft
	Options:	Planet gears



Loading capacity	Max. radial force	N	300	
	Max. axial force	N	40	
	Max. input speed	rpm	4500	
	Temperature range	°C	-20° – +40°	
Mounting	Shaft diameter	mm	12	
	Weight	kg	0.5	
	Mounting part (standard)		front side	
Translations				
	i	Stages	M (Nm)	η
	5	2	0.35	0.82
	10	2	0.35	0.82
	12,5	2	0.35	0.82
	20	3	1.4	0.74
	25	3	1.4	0.74
	30	3	1.4	0.74
	40	4	2.8	0.66
	50	4	2.8	0.66
	60	4	2.8	0.66
	i	Stages	M (Nm)	η
	100	5	4	0.6
	125	5	4	0.6
	150	5	4	0.6
	188	5	4	0.6
	234	5	4	0.6
	160	6	4	0.54
	200	6	4	0.54
	250	6	4	0.54
	300	6	4	0.54
	i	Stages	M (Nm)	η
	469	6	4	0.54
	586	6	4	0.54
	750	7	4	0.48
	937	7	4	0.48
	1172	7	4	0.48
	1200	8	4	0.44
	1500	8	4	0.44
	1875	8	4	0.44
	2344	8	4	0.44
	i	Stages	M (Nm)	η
	2441	8	4	0.44
	i	Stages	M (Nm)	η
	2930	8	4	0.44

Dimensions



Above:
Add-on gear
Below:
Solo gear

