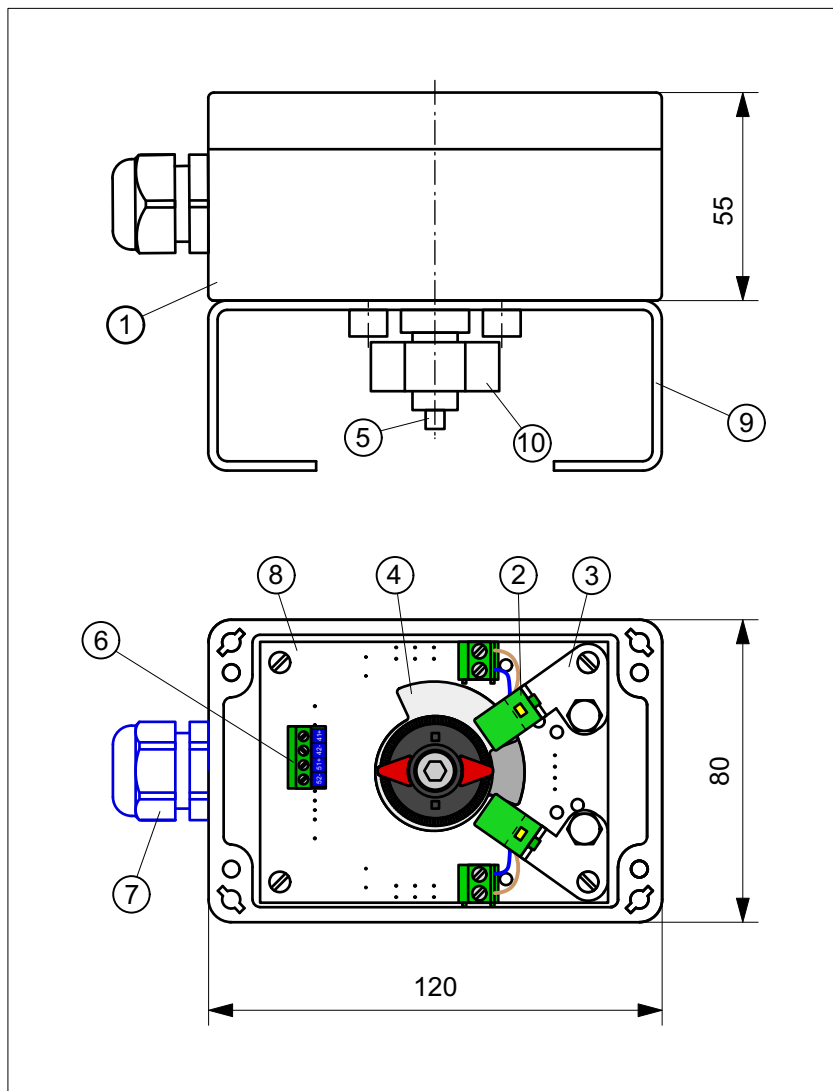




ET-Module PF3NLVFAZ0

ET-Module with two proximity switches Pepperl+Fuchs SC3,5-N0
on circuit board in Vestamid-Housing 120x80x55 mm, with vision panel



TECHNICAL DATA

Manufacturer: Pepperl+Fuchs
Type: SC3,5-N0, slot type
NAMUR,
Normally closed contact

Depth of immersion: 5 ... 7 mm
Nominal voltage: 8 V DC
Operating current: 5 ... 25 V DC
Current consumpt.: ≥ 3 mA, inactive
 ≤ 1 mA, active

Temperature: $-25 \dots +85^{\circ}\text{C}$
Switch. frequency: 0 ... 3000 Hz
Signal: LED, yellow
Housing: Vestamid, black
Cover with vision panel

Sealing: EPDM
Ingress protection: IP67 (Sensor)
IP65 (Housing)

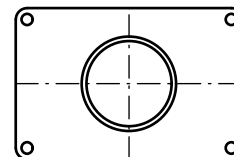
Switching precision: $<1.5^{\circ}$
System connection: Cable gland M20x1,5
Clamp. range 7...13 mm

Clamps: Screw clamps
up to $1,5 \text{ mm}^2$



II 2G Ex ia IIC T6 Gb

EC-Type Examination Certificate No.
PTB 99 ATEX 2219 X



Housing cover with vision panel $\varnothing 45$

OBJECT LIST

Pos.	Pcs.	Description	Material
1	1	Housing	Vestamid
2	2	P+F SC3,5-N0	-
3	2	Fastener SJ	A2
4	2	Switch plate	ABS + matt nickel pl.
5	1	Axis Standard	A2
6	1	Screw clamp, 4-pole	-
7	1	Cable gland M20x1,5	PA
8	1	Circuit board	-
9	1	Bracket size 1 - 4	A2
10	1	Position indicator	PE

WIRING DIAGRAM

