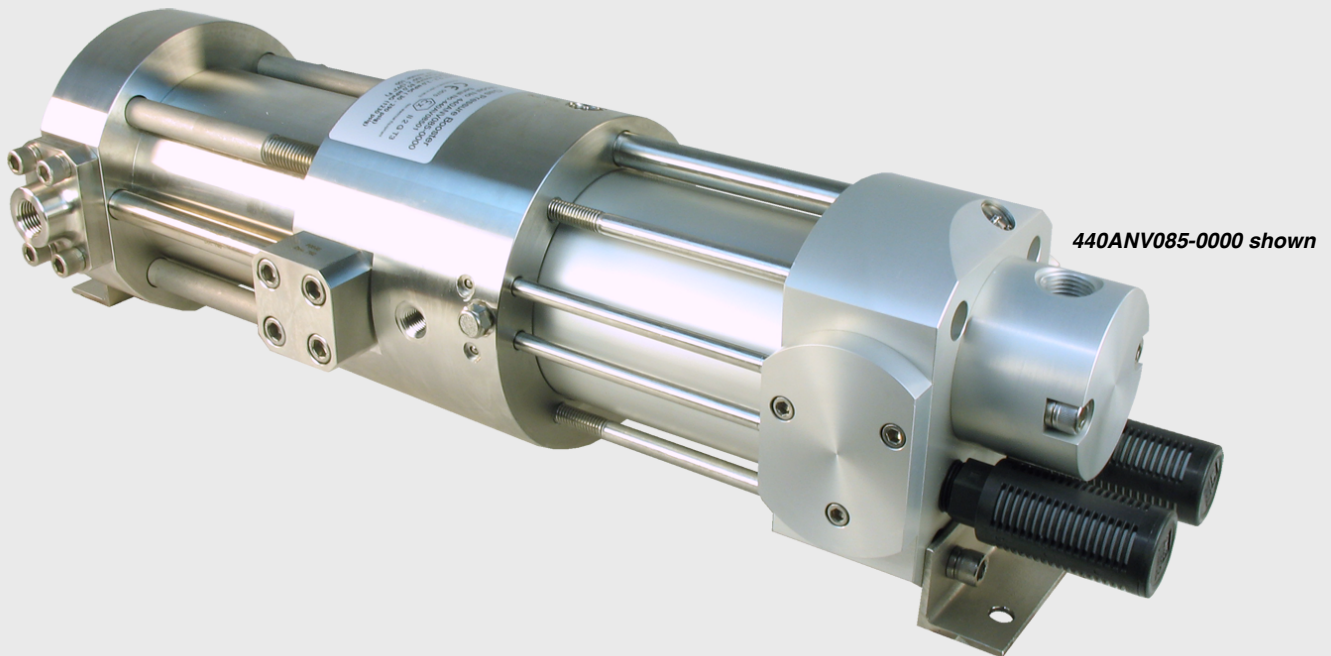



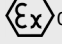
440 Series - 85 bar



Maximum Pressure Rating
8.5 MPa / 85 bar / 1235 psi

Model Specifications

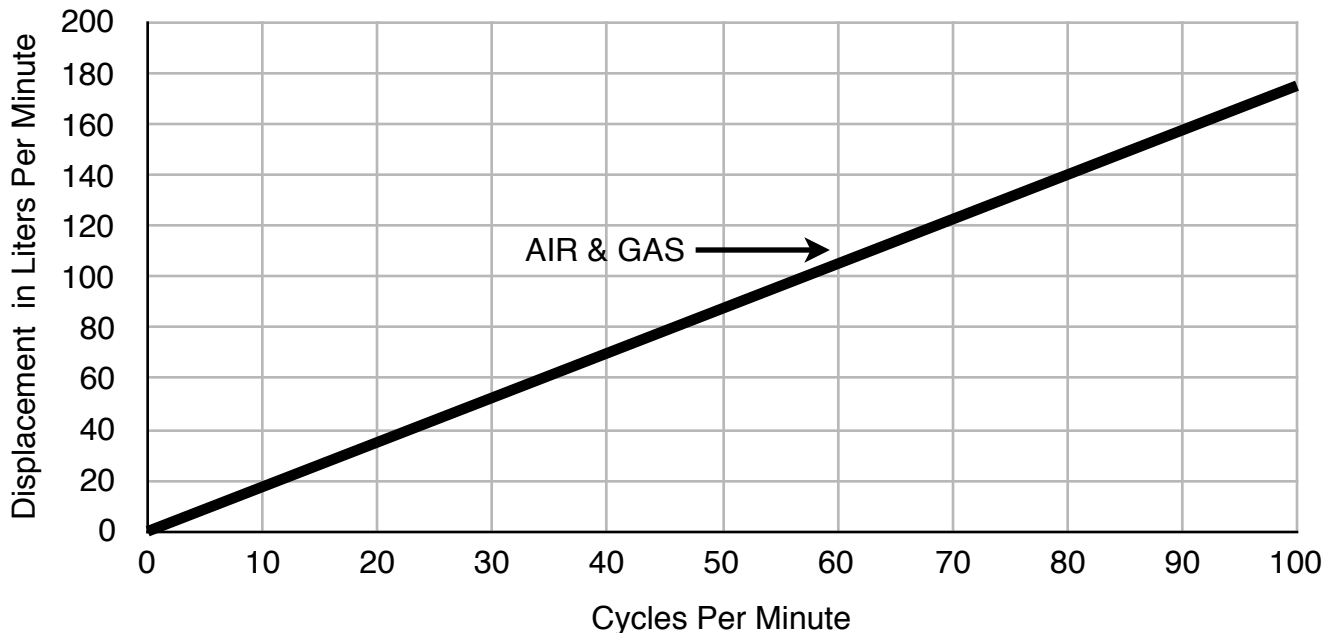
This booster series is designed in accordance with the ASME Boiler and Pressure Vessel Code Section VIII, Div. 1 (not stamped). The gas wetted components comply with:

NACE MR0175/ISO15156-2, MR0103-2010 and CE ATEX   0575 II 2 G T3 200 Deg. C

Maximum Gas Discharge Pressure	8.5 MPa
Maximum Gas Discharge Temperature	200 °C
Maximum cycle rate (Note 1)	100 cpm
Gas cylinder bore diameter	102 mm
Gas displacement per cycle	1.75 liters
Maximum gas displacement flowrate	175 l/min
Nominal Pressure boost ratio (Note 2)	0.8/1
Piston rod diameter	15.9 mm

Maximum air drive pressure (Note 3)	2.0 MPa
Drive air temperature range	0 to 75°C
Air cylinder bore diameter	102 mm
Air displacement per cycle	1.75 liters
Maximum air displacement	175 l/min
Stroke length	109 mm
Weight (approximate)	35 kg
Ambient temperature (Note 4)	-15 to 75 °C

440 Models - Air and Gas Displacement vs. Cycle Rate



Note 1. A cycle consists of a forward and a reverse stroke.

Note 2. This is a nominal, operating ratio of the gas pressure increase over the drive air pressure. It is not the maximum ratio.

Note 3. Nitrogen or clean natural gas may also be used for the drive gas.

Note 4. Where ambient temperatures fall below 0°C a heater is required for the drive air.

GCS
GAS COMPRESSION
SYSTEMS

Model Numbering System

440 ANV 085 - 0000 -

Drive assembly material

A – anodized aluminum

Wetted parts material

N – 316L SS

Wetted static seal material

Pipe size

0 – 1/2 NPT inlet

1 – G 1/2 BSPP

2 – 1 NPT

4 – 3/4 NPT

7 – SAE J1926 1–1/16

8 – G 3/4 BSPP

A – 3/4 inch butt weld

B – 1 inch butt weld

C – 1 inch with 1/2 Sch 80 vent port butt weld

D – 1/2 inch butt weld

E – 3/4 inch with 1/2 Sch 80 vent port butt weld

F – 1 inch with 3/4 Sch 80 vent port butt weld

W2 – Replacement booster • no butt weld connectors (2 flange)

W3 – Replacement booster • no butt weld connectors (3 flange)

Pipe ports and butt weld connectors

0 – 1/4 NPT vent connections (two)

2 – inlet & discharge

3 – inlet, discharge & vent

1 – G 1/4 BSPP vent

4 – 3/4 NPT vent

5 – 1/2 NPT vent

Pipe schedule

00 – 1/2 NPT discharge

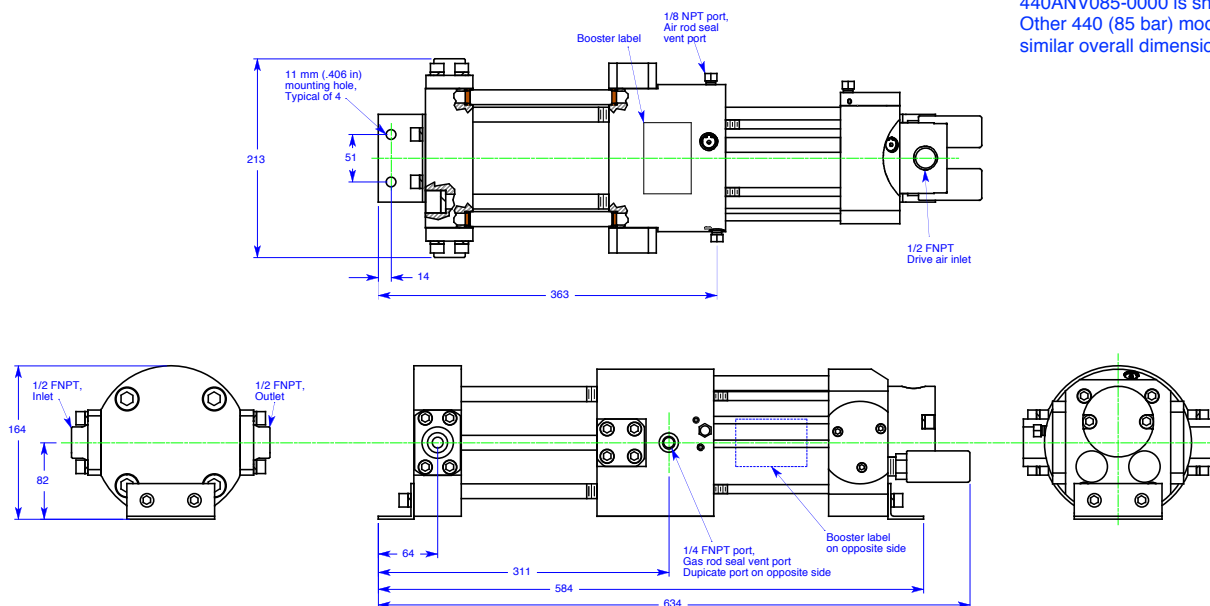
40 – schedule 40

80 – schedule 80

Additional Option Codes

Typical Dimensions

Dimensions are in millimeters



440ANV085-0000 is shown.
Other 440 (85 bar) models have
similar overall dimensions.

GCS
GAS COMPRESSION
SYSTEMS