

GENERAL DESCRIPTION / APPLICATIONS

Three way direct acting solenoid valve with spring return, redundant configuration circuit.

Suitable for gaseous media compatible with the (body/seals) material used, vacuum.

Not suitable for liquid media.

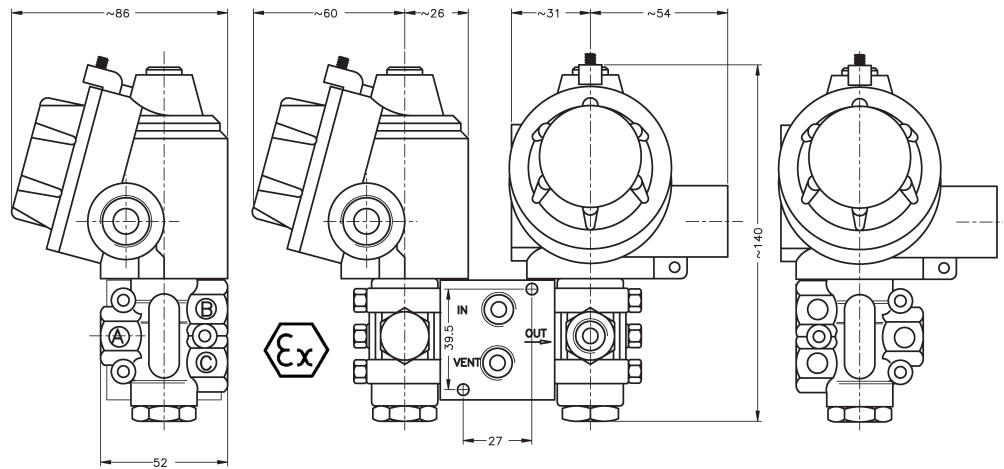
Forged brass, nickel-plated brass or stainless steel body.

Stainless steel internal parts.

Stainless steel springs.

360° degrees orientable solenoid.

Mountable in any position.



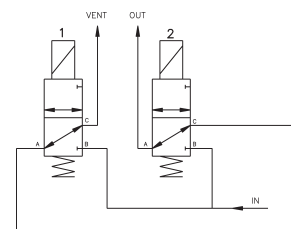
ELECTRICAL INFORMATION

Light alloy explosion-proof "Ex-d" (EN60079-1) solenoid housing. Electrical and mechanical parts certified according to 2014/34/UE ("ATEX") directive, suitable to control the flow of inert and/or flammable gases or liquids. Internal and external anti-twist ground connecting screws. Inside terminal board suitable for cable up to 2,5 mm².

cable entry threaded:	1/2" Gk UNI-6125 (standard) 1/2" NPT, ISO M20x1.5 (available upon request)
protection class:	IP-67
Ex protection class:	Ex-d II 1G/2GDc (IIB o IIC)
Temperature class:	T6 or T5 (t.amb -20 ÷ +40 °C) T5 or T4 (t.amb -20 ÷ +60 °C) upon request. T5 or T4 (t.amb -60 ÷ +60 °C) upon request F (155°C) - H (180°C) upon request.
Coil insulation class:	H (180°C).
Winding wire class:	Continuous (S.I.) 100% ED
Duty:	Alternate current* 11W. Direct current 11W.
Power consumption ⁽²⁾ :	± 10% (standard) others available upon request
Tolleranza tensione:	± 10%
Voltage tolerance:	>1000 MOhm
Insulation:	>2000 V/1'
Dielectrical Strength:	12, 24, 48, 110, 115, 125, 220, 240 Volt
Standard voltages	DC ₍₃₎ o AC~(50/60Hz): other voltages available upon request.

* Alternate current operation (Vac~) is performed using a direct current coil fitted with an internal rectifier (Nadi coil type B6/R).

OPERATION



C90 - Redundant configuration (Voting 1oo2)

In:	N
Out:	OUT
Vent:	VENT

Coil de-energized: port IN closed.
port OUT and VENT open.

Coil energized: port VENT closed
port IN and OUT open.

SPECIFICATIONS AND DIMENSIONS

MODEL	ORIFICE DIAMETER	BODY RATING	PRESSURES IN BAR			Flow factor kv (liters/min.)	WEIGHT Kg.
			MIN./MAX. OPERATING	MIN. DIFFERENTIAL	MAX. PRESSURE		
C 9 0	6	10	0	10	10	9	3

suffix (options available upon request): ⁽¹⁾ "LT" (low t.amb. certificate), ⁽²⁾ "LC" (low consumption), ⁽³⁾ "V" spike suppressor.

a Body material	b Port size	c Seals material	d Protection class	
T Brass. I Stainless steel.	C 1/4" GAS D 1/4" NPT	0 Buna N 1 FPM 7 HNBR	B Ex-d IIB C Ex-d IIC	