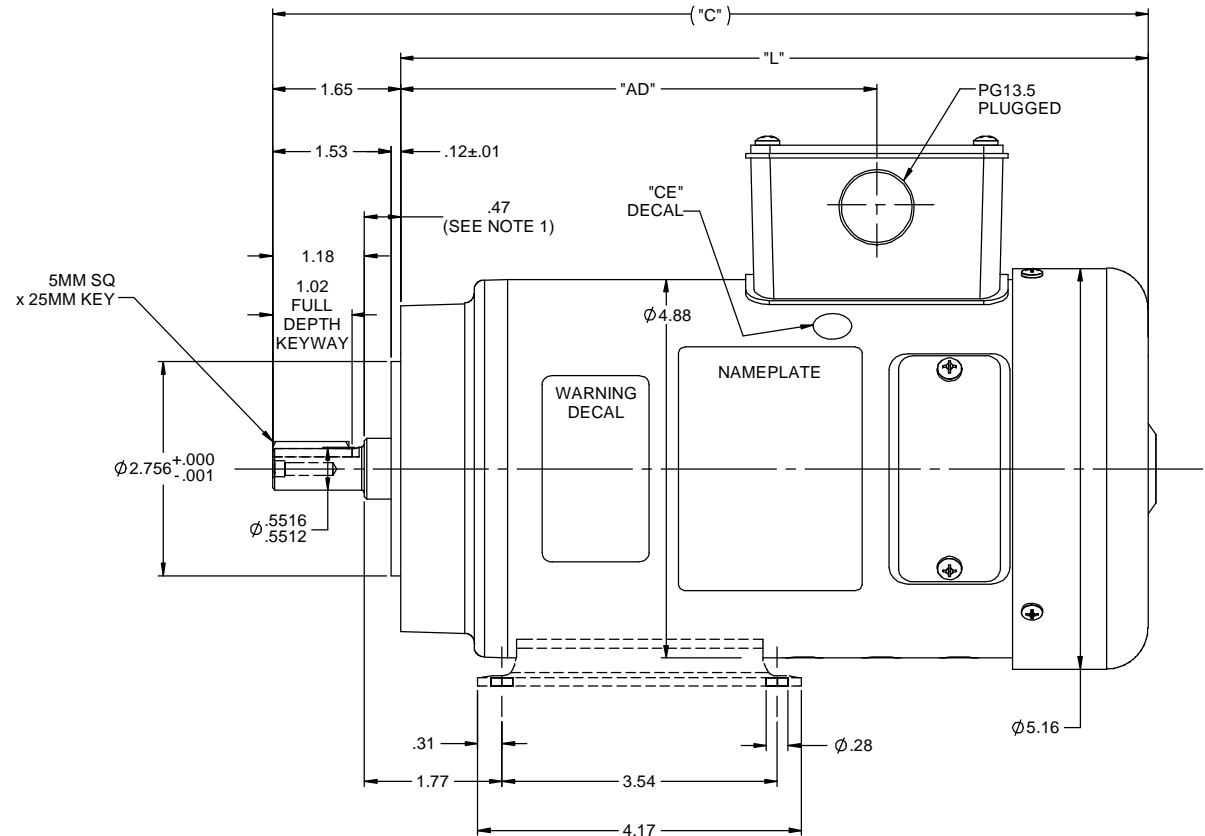
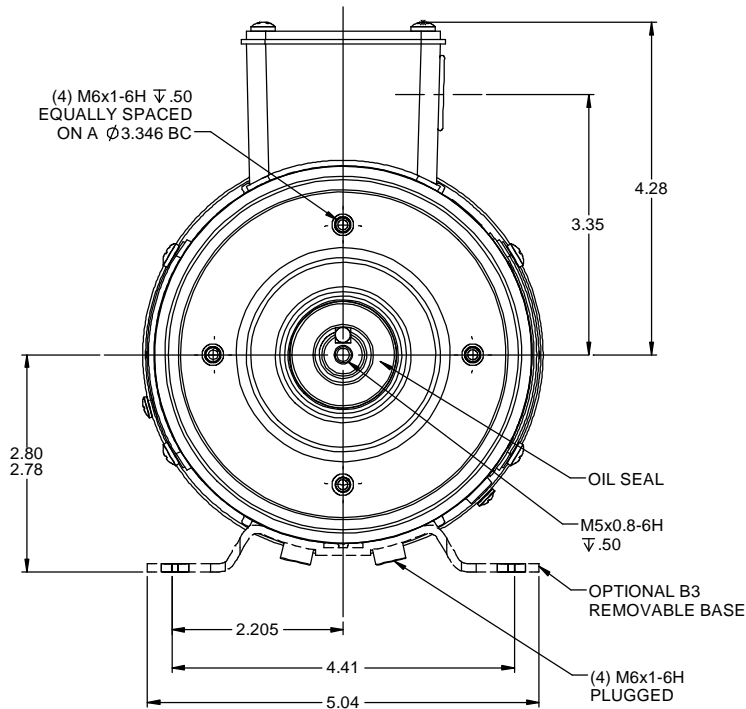


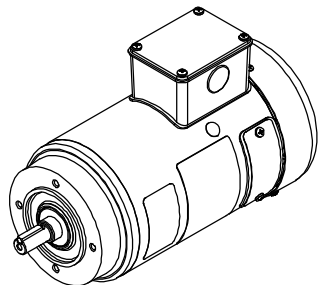
RBC PROPRIETARY AND CONFIDENTIAL INFORMATION
This document is the property of REGAL BELOIT CORPORATION ("RBC") including its subsidiaries and divisions and contains proprietary information of RBC. This document is loaned on the express condition that neither it nor the information contained therein shall be disclosed to others without the express written consent of RBC, and that the information shall be used by the recipient only as approved expressly by RBC. This document shall be returned to RBC upon its request. This document may be subject to certain restrictions under U.S. export control laws and regulations.




NOTES:

- 1) DIMENSION IS SPACE PROVIDED FOR A BOLT-ON B5 OR B14 ADAPTER KIT FOR THE IEC 71 FRAME.
- 2) MAXIMUM FACE RUNOUT TO BE .004 T.I.R.
- 3) MAXIMUM PILOT ECCENTRICITY .004 T.I.R.
- 4) PERMISSIBLE SHAFT RUNOUT .002 T.I.R.
- 5) GASKETS THROUGHOUT.

CATALOG No.	"C"	"L"	"AD"	VOLTS	K.W.	RPM
098014.00	11.28	9.63	6.13	180	.25	1800
098015.00	11.78	10.13	6.63	180	.37	1800
098016.00	10.78	9.13	5.63	180	.37	3000
098017.00	11.78	10.13	6.63	180	.55	3000



			TOLERANCES UNLESS SPECIFIED			ELECTRIC MOTORS GEARMOTORS AND DRIVES	DRAWN BJB 01/22/92		
			DEC	INCHES			CHK		
			X	±.1	APPR RPB 01/22/92				
			XX	±.03	SCALE 5:8				
---	REDRAWN IN SOLIDWORKS	IPG 2/20/12	XXX	±.005	TITLE OUTLINE		REF		
05	CHANGED TO MYLAR NAMEPLATE PER ISAAC 08-24-08	RPB 12/17/08	BC	XXXX ±.0005	42 FRAME DC - IEC 71		FMF		
NO	REVISION	BY & DATE	CHK	ANG ±1/2°	FINISH		PAGE	OF	
THIRD ANGLE PROJECTION			RFP		PREV		SIZE	DRAWING NO	REV
			NETWORK FILE NAME		027543		B	027543	---