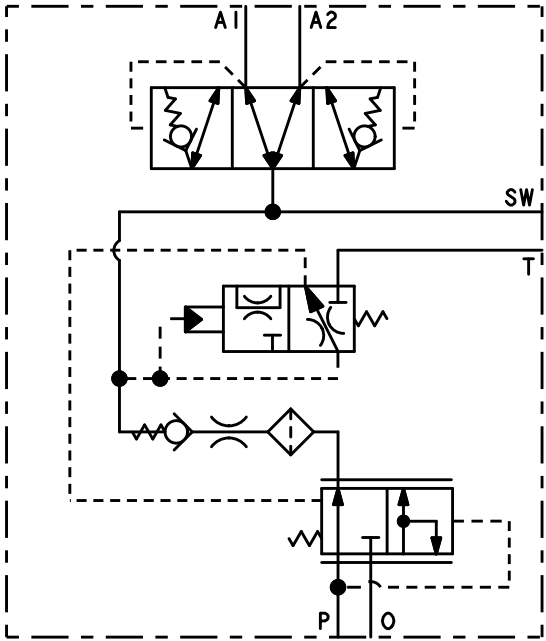


PART NUMBER	DESCRIPTION	REVISION	ALLOWABLE SYSTEM RELIEF VALVE PRESSURE (PSI [bar])	ACCUMULATOR CHARGING LOW LIMIT (PSI [bar])	ACCUMULATOR CHARGING HIGH LIMIT (PSI [bar])	ACCUMULATOR CHARGE RATE (GPM [LPM])	INTERNAL FILTRATION	REPAIR KIT
06-463-200	ACV-DMO11-128-159-10	H	2750±250 [189.6±17.2]	1850±50 [127.6±3.4]	2300±50 [158.6±3.4]	2.7±0.5 [10.2±1.9]	54 MICRON OR BETTER	06-400-112
06-463-202	ACV-DMO11-155-190-10	G	3050±50 [210.3±3.4]	2250±50 [155.1±3.4]	2750±50 [189.6±3.4]	2.7±0.5 [10.2±1.9]	54 MICRON OR BETTER	06-400-112
06-463-204	ACV-DMO11-114-138-10	H	2600±400 [179.3±27.6]	1650±50 [113.8±3.4]	2000±50 [137.9±3.4]	2.7±0.5 [10.2±1.9]	54 MICRON OR BETTER	06-400-112
06-463-206	ACV-DMO11-86-124-10	G	2525±475 [174.1±32.8]	1250±50 [86.2±3.4]	1800±50 [124.1±3.4]	2.7±0.5 [10.2±1.9]	54 MICRON OR BETTER	06-400-112
06-463-208	ACV-DMO11-117-145-10	H	2600±400 [179.3±27.6]	1700±50 [117.2±3.4]	2100±50 [144.8±3.4]	2.7±0.5 [10.2±1.9]	54 MICRON OR BETTER	06-400-112
06-463-210	ACV-DMO11-103-128-10	H	2550±450 [175.8±31.0]	1500±50 [103.4±3.4]	1850±50 [127.6±3.4]	2.7±0.5 [10.2±1.9]	54 MICRON OR BETTER	06-400-112
06-463-212	ACV-DMO11-86-103-10	E	2350±650 [162.0±44.8]	1250±50 [86.2±3.4]	1500±50 [103.4±3.4]	2.7±0.5 [10.2±1.9]	54 MICRON OR BETTER	06-400-112
06-463-214	ACV-DMO11-64-83-10	F	2225±775 [153.4±53.4]	925±50 [63.8±3.4]	1200±50 [82.7±3.4]	2.7±0.5 [10.2±1.9]	54 MICRON OR BETTER	06-400-112
06-463-216	ACV-DMO11-93-114-3	E	2450±550 [168.9±37.9]	1350±50 [93.1±3.4]	1650±50 [113.8±3.4]	.75±0.25 [2.8±.9]	54 MICRON OR BETTER	06-400-112
06-463-218	ACV-DMO11-95-124-6	E	2525±475 [174.1±32.8]	1375±50 [94.8±3.4]	1800±50 [124.1±3.4]	1.7±0.5 [6.4±1.9]	54 MICRON OR BETTER	06-400-112
06-463-222	ACV-DMO11-148-179-10	E	2925±75 [201.7±5.2]	2150±50 [148.2±3.4]	2600±50 [179.3±3.4]	2.7±0.5 [10.2±1.9]	54 MICRON OR BETTER	06-400-112
06-463-226	ACV-DMO11-86-103-3	E	2350±650 [162.0±44.8]	1250±50 [86.2±3.4]	1500±50 [103.4±3.4]	.75±0.25 [2.8±.9]	54 MICRON OR BETTER	06-400-112
06-463-228	ACV-DMO11-145-179-3	E	3050±50 [210.3±3.4]	2100±50 [144.8±3.4]	2600±50 [179.3±3.4]	.75±0.25 [2.8±.9]	54 MICRON OR BETTER	06-400-112
06-463-230	ACV-DMO11-114-138-6	E	2600±400 [179.3±27.6]	1650±50 [113.8±3.4]	2000±50 [137.9±3.4]	1.7±0.5 [6.4±1.9]	54 MICRON OR BETTER	06-400-112
06-463-234	ACV-DMO11-138-166-6	E	2800±200 [193.1±13.8]	2000±50 [137.9±3.4]	2400±50 [165.5±3.4]	1.7±0.5 [6.4±1.9]	54 MICRON OR BETTER	06-400-112
06-463-238	ACV-DMO11-124-152-19	C	2700±300 [186.2±20.7]	1800±50 [124.1±3.4]	2200±50 [151.7±3.4]	5.0±1.0 [18.9±3.8]	54 MICRON OR BETTER	06-400-112
06-463-248	ACV-DMO11-114-138-6U	B	2850±500 [196.5±34.5]	1650±50 [113.8±3.4]	2000±50 [137.9±3.4]	1.7±0.5 [6.4±1.9]	100 MICRON NOMINAL	06-400-447
06-463-252	ACV-DMO11-45-60-6	A	2063±938 [142.2±64.7]	650±50 [45±3.4]	875±50 [60.3±3.4]	1.7±0.5 [6.4±1.9]	100 MICRON NOMINAL	06-400-485
06-463-254	ACV-DMO11-55-71-3	B	2138±862 [147.4±59.4]	800±38 [55.2±2.6]	1025±38 [70.7±2.6]	.75±0.25 [2.8±.9]	100 MICRON NOMINAL	06-400-485



NOTES:

- 1) FOR USE WITH MINERAL BASE HYDRAULIC OIL.
- 2) DIMENSIONS MAY VARY BETWEEN UNITS AND ARE FOR REFERENCE PURPOSES ONLY. MILLIMETER VALUES MAY NOT BE AN EXACT CONVERSION OF INCH VALUES.
- 3) REPAIR KIT P/N: SEE CHART
- 4) SURFACE COATING: OLIVE DRAB PRIMER PER DOD-P-15328 SPECIFICATION.

PERFORMANCE CHARACTERISTICS:

- 1) SYSTEM RELIEF VALVE NOT INCLUDED.
- 2) RECOMMENDED SYSTEM FLOW 2 TO 30 GPM [7.6 TO 113.6 LPM].
- 3) FLOW THRU PRESSURE DROP IS APPROXIMATELY 70 PSI [4.8 bar] AT 15 GPM [56.8 LPM] WITH 14 CENTISTOKE OIL.
- 4) EXTERNAL FILTRATION OF 10 MICRON OR BETTER IS REQUIRED.

INCH
[MILLIMETER]

MICO

North Mankato, Minnesota USA

COMPONENT AND SYSTEM RECOMMENDATIONS MADE BY MICO, INC ARE BASED ON INFORMATION SUPPLIED BY POTENTIAL USER AND/OR SYSTEM DESIGNER. THE POTENTIAL USER AND/OR DESIGNER MUST MAKE FINAL ACCEPTANCE AND APPROVAL OF COMPONENTS AND SYSTEM AFTER TESTING PERFORMANCE ON AN ACTUAL APPLICATION FOR WHICH SYSTEM WAS DESIGNED.

MICO, INC CLAIMS PROPRIETARY RIGHTS TO THE MATERIAL DISCLOSED IN THIS DOCUMENT. THIS DOCUMENT IS PROVIDED IN CONFIDENCE AND MAY NOT BE REPRODUCED OR DISCLOSED WITHOUT WRITTEN PERMISSION FROM MICO, INC. COPYRIGHT MICO, INC. ALL RIGHTS RESERVED.

SCALE	TITLE			
0.500	ACV-DMO			
DWN JJC 2015-06-24	APVD PROD ENGRG DPD 2015-06-30	SIZE	DRAWING NUMBER	REV
X NO SEE CHART	APVD ENGRG CL 2015-06-25	B	06-463-240 CUSTOMER COPY	K 2 1