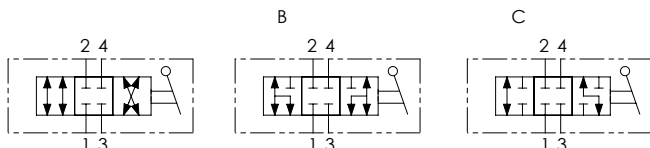


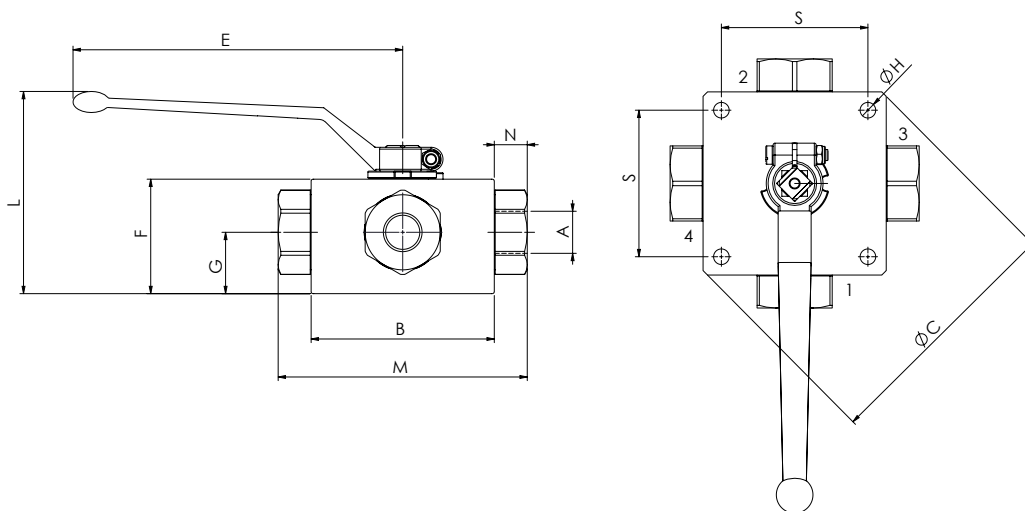
Schema idraulico - Hydraulic circuit



Dati tecnici - Technical data

Olio idraulico/Mineral oil	ISO 6743/4 (DIN 51524)		
Viscosità olio/Oil viscosity	15-250 mm²/s (15 to 250 cSt)		
Classe di contaminazione max con filtro	ISO 4406:1999 Classe 19/17/14		
<i>Max contamination index with filter</i>			
Temperatura dell'olio/Oil temperature	-20°C +80°C	-4°F + 176°F	
Temperatura ambiente/Ambient temperature	-20°C +50°C	-4°F + 122°F	
È indispensabile l'utilizzo di un filtro per proteggere la valvola (filtrazione consigliata 15 µm)			
<i>It is necessary a filter use to protect the valve (advised filtration 15 µm)</i>			

	01	02	03	04	05
Codice ordinazione Ordering code	RAS4		NPT		P
01	Valvole a sfera a 4 vie (4 ways ball valves)				RAS4
02	Dimensione (Size)	NPT 1/4			140
		NPT 3/8			380
		NPT 1/2			120
		NPT 3/4			340
		NPT 1			100
		NPT 1-1/4			114
		NPT 1-1/2			112
03	Filettatura (Thread)	NPT			NPT
04	Schema (Circuit)	Standard			/
		Schema B			B
		Schema C			C
05	Optional	Fori di fissaggio (Fixing ports)			P



Caratteristiche tecniche - Technical characteristics

Tipo Type	A	Portata max Max flow l/min-USgpm	Pressione max Max pressure bar/PSI	B	C	E	F	G	H	L	M	N	S	Peso approssimativo Approx weight kg/lb
RAS4140NPT	NPT 1/4	25 (6.6)	500 (7250)	70 (2.76)	/	110 (4.33)	42 (1.65)	21,5 (0.85)	6,5 (0.26)	97,5 (3.84)	100 (3.94)	15,5 (0.61)	55 (2.17)	1,80 (3.96)
RAS4380NPT	NPT 3/8	35 (9.2)	400 (5800)	80 (3.15)		180 (7.09)	53 (2.09)	28,5 (1.12)		101 (3.98)	115 (4.53)		65 (2.56)	3 (6.60)
RAS4120NPT	NPT 1/2	60 (15.8)	350 (5075)	100 (3.94)		62 (2.44)	33 (1.30)	8,5 (0.33)	110 (4.33)	136 (5.35)	17 (0.67)	80 (3.15)	5,2 (11.44)	
RAS4340NPT	NPT 3/4	100 (26.4)		113 (4.45)		68 (2.68)	36 (1.42)		116,5 (4.59)	156 (6.14)	21 (0.83)	6,9 (15.18)		
RAS4100NPT	NPT 1	150 (89.6)		118 (4.65)	138 (5.43)	300 (11.81)	82 (3.23)	47,5 (1.87)	130,5 (5.14)	181 (7.13)	24 (0.94)	85 (3.35)	9 (19.80)	
RAS4114NPT	NPT 1-1/4												9,2 (20.24)	
RAS4112NPT	NPT 1-1/2													